

## **INTRODUCTION**

The Sacramento International Airport (SMF) experiences periods of dense fog which introduce special hazards to ground vehicles operating on the airfield and in the vicinity of aircraft, both parked and taxiing.

## **PURPOSE**

The Low Visibility Operations Plan will provide guidelines and operational measures to minimize the risk to ground operations during periods of reduced visibility.

## **OPERATIONAL RESTRICTIONS ON GROUND MOVEMENT**

During low visibility conditions at SMF, only those ground vehicles with an operational need will be authorized to operate on the airfield, specifically around the concourses and other aircraft parking ramps. All others will be required to utilize alternate routes or wait until low visibility conditions have concluded.

Earhart Drive between Taxiway W and Taxilane Y will be closed during reduced visibility conditions, as defined below in the Airside Operations section. The only exceptions are airport approved Aircraft Fuel Providers and Airport Fire as noted in their respective sections below.

It is the responsibility of airport tenants and County managers to notify their respective employees when a reduced visibility Emergency notice is issued. See Exhibit 1 for a visual rule of thumb. If drivers waiting at the stop signs/stop bars on Earhart Drive cannot see the landmarks identified on this Exhibit, they are not authorized to cross Taxiway W and Taxilane Y without Airport approval.

## **PROCEDURES**

### **Airside Operations:**

- 1) Issue an emergency notification to airlines and tenants when low visibility is forecast for SMF.
- 2) Issue an emergency notification to airlines and tenants when low visibility conditions (2,000' visibility or lower) exist at SMF.
- 3) Provide "follow me" services for aircraft and ground vehicles as requested.
- 4) Monitor and enforce ground vehicle restrictions on the airfield.
- 5) Determine when vendor deliveries to airfield locations cannot be conducted safely and halt when appropriate. Notify the Comm Center and Landside Operations.
- 6) Issue an emergency notification when reduced visibility conditions have concluded, and normal ground operations may resume.

**Landside Operations:**

- 1) Unlock alternate Liquid Waste Disposal (Biffy) Dump location adjacent the PPM building when low visibility conditions have been initiated (see Exhibit 2 for location of alternate site).
- 2) Respond to Gate 10E as requested to provide access.
- 3) Halt vendor deliveries when directed by Airside Operations.
- 4) Secure Liquid Waste Disposal Dump when low visibility conditions have concluded.

**Airlines and Ground Handlers:**

- 1) Fuel and/or service all ground vehicles in preparation (prior to forecasted low visibility conditions).
- 2) Empty all Lav Carts in preparation (prior to forecasted low visibility conditions).
- 3) Communicate to all ground personnel when notified of the activation of low visibility conditions.
- 4) Reduce ground vehicle movements to only those required to support flight operations.
- 5) If necessary to service a Lav Cart, utilize the alternate landside Liquid Waste Disposal Dump location (outside Gate 6E, near Parks Maintenance, see Exhibit 2 for location).

**Aircraft Fuel Providers:**

- 1) When necessary to cross between north and south airfield via Earhart Dr, station supervisors with aviation radios such that they can monitor the movement of aircraft and direct fuel trucks across Taxiways Y & W safely.
- 2) When unable to see the established landmarks identified on Exhibit 1, do not cross Taxiways Y & W unless being directed or escorted by Supervisor or Airside Operations personnel with an aviation radio. Landmarks are:
  - A) Northbound on Earhart – yellow light on southeast corner of fueling island canopy at Allied Aviation.
  - B) Southbound on Earhart – yellow light on northwest corner of Terminal A.

**Concessionaires:**

- 1) When low visibility conditions are forecast, re-schedule vendor deliveries as appropriate.
- 2) When low visibility conditions are forecast, move product between airside and landside locations in advance.

- 3) When low visibility conditions exist, expect vendor delivery delays until Airside Operations has determined escorting of vendor vehicles on the airfield can be conducted safely.

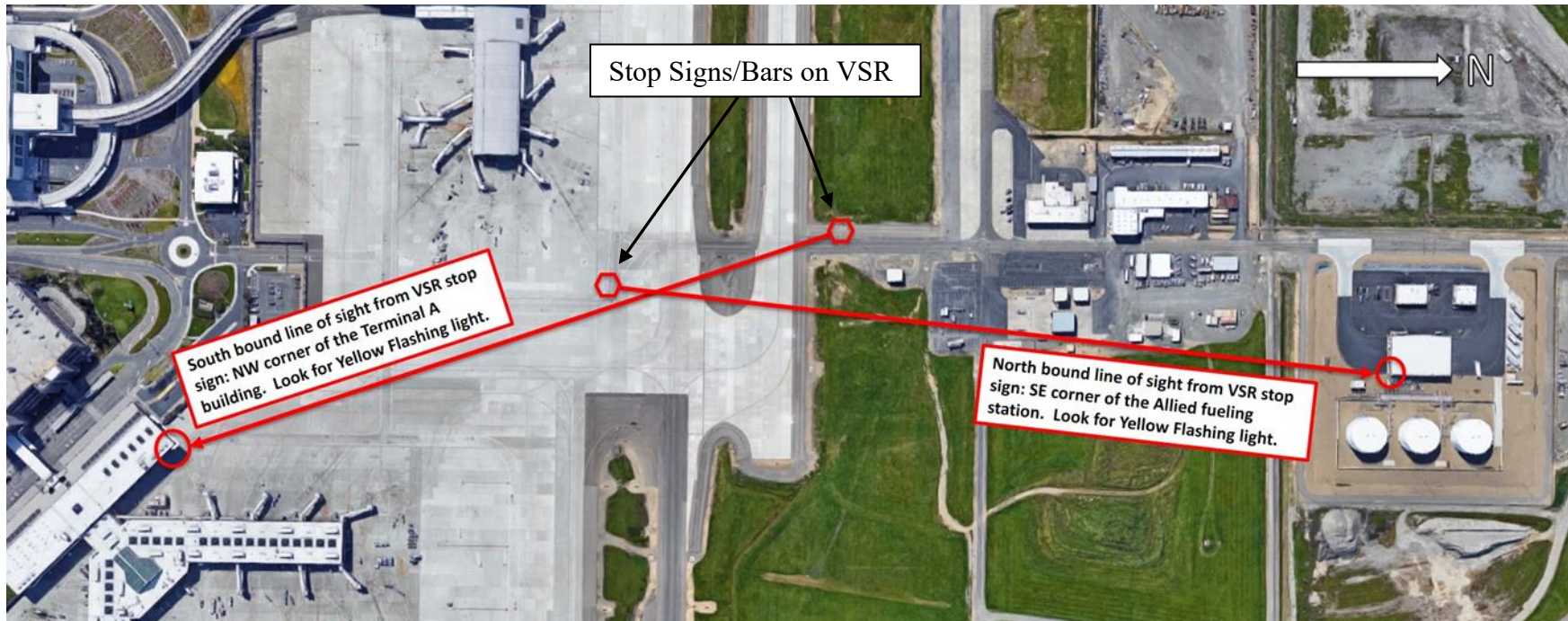
Airport Maintenance, DGS and other support personnel:

- 1) During low visibility conditions, restrict airfield driving to only that essential to support airport or airline operations.
- 2) When airfield driving during low visibility conditions is necessary, utilize alternate route (typically exiting airfield) to move between north and south airfields. Crossing via Earhart Dr and between Concourses A & B will be prohibited.

Airport Fire:

- 1) During low visibility conditions, restrict airfield driving to only that essential for medical aid and emergency response.
- 2) When necessary to cross Taxiway W and Taxiway Y during reduced visibility, Airport Fire will utilize the same procedures Airport Operations uses (e.g. monitoring the movement of aircraft using aviation radios and/or communicating with the tower).

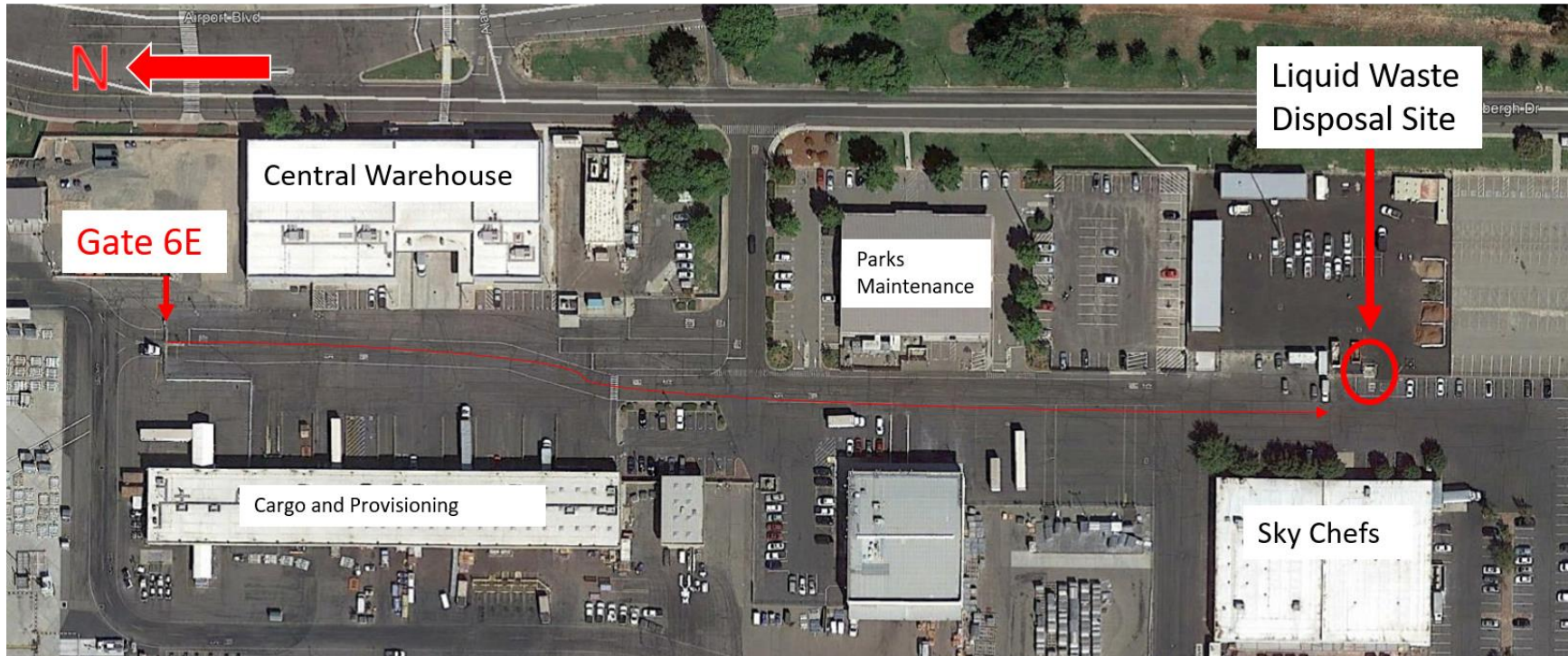
**Exhibit 1 – Landmarks to determine when Low Visibility Operations are in effect**



If drivers waiting at the stop signs/stop bars depicted on Earhart Drive (VSR) cannot see the landmarks identified above (in their direction of travel), they are not authorized to cross Taxiway W and Taxilane Y without Airport approval.



**Exhibit 2 – Alternate Liquid Waste Disposal Site when Low Visibility Operations are in effect**



Above: Alternate Liquid Waste Disposal Site location and driving route from Gate 6E. Right: Close up photo of the Alternate site for Biffy dump use during reduced visibility. NOTE: This alternate site will only be unlocked when Airside Operations implements reduced visibility operations. Use of the site located north of Taxiway W is to be used at all other times.

