

Map



General Data

Description	Northern portion of airport property between Mather Blvd and Macready Ave	Address	CA		
Deployment Year	2026	City Limits			
Availability	NOW	Location	Mather Airport		
Acreage (Developable/Total)	2.7 / 2.7	Access/Frontage	Mather Blvd., Macready Ave., and Lemay St		
Zoning	Airport Special Use	Runway Access	No	Railroad Access	No
Shape		Airspace Protection	P77 Horizontal		
Recent Appraisal		Appraisal Value			

Environmental	
Topography	Level
Floodplain	No
Wetlands	No
Hazardous	
Previously Disturbed	

Utilities	
Communications	Available
Gas	On Site
Power	On Site
Sewer	Available
Water	Unknown

Highest & Best Use

Primary Use	Industrial
Secondary Use	Retail
Building Potential	H
FTZ Potential	
Height Restrictions	

Development Concepts

File Name	Upload Date	Uploaded By
Site A,B, & C Concept.png	06/12/2026	carceneaux@mjinc.com

Marketing Materials

File Name	Upload Date	Uploaded By
Sacramento MHR Brochure Design_Site ABC_WEB.pdf	06/12/2026	carceneaux@mjinc.com

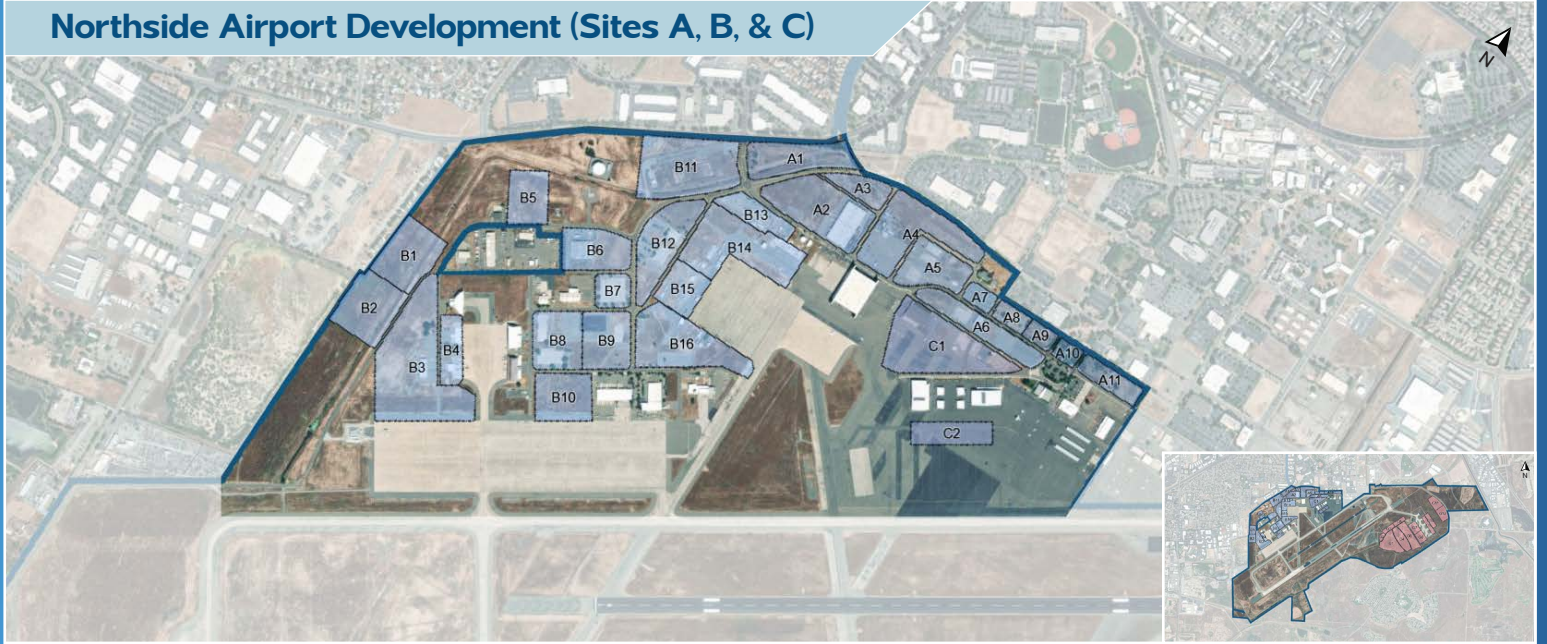


Prime Aeronautical, Commercial and Industrial Development Opportunity

Mather Airport (MHR), located in Northern California’s logistics corridor just 20 minutes from downtown Sacramento, offers a prime opportunity for development with direct access to regional, national, and global markets. Purpose-built for cargo and general aviation, the airport features an 11,300-foot runway, FAA tower, and strong aviation infrastructure supported by a diverse on-airport business ecosystem.

With available land, modern amenities, and a proven operational foundation, Mather provides a compelling platform for high-impact aviation and non-aeronautical development, including commercial and light industrial.

Northside Airport Development (Sites A, B, & C)



Sites A, B, & C

Site	Acreage	Site	Acreage	Site	Acreage	Site	Acreage	Site	Acreage
A1	6.4	A7	1.3	B2	7.1	B8	6	B14	8.2
A2	10	A8	1.5	B3	17.5	B9	5.8	B15	3.9
A3	2.7	A9	1.3	B4	3.2	B10	5.6	B16	10.2
A4	9.8	A10	1.1	B5	4.5	B11	11.7	C1	12.3
A5	5.5	A11	2.8	B6	5.6	B12	7.5	C2	3.9
A6	5.7	B1	6.7	B7	2.5	B13	6.4		

The Northside Area of Mather Airport presents a strategically positioned development platform, combining strong land-side access, existing infrastructure, visibility, and flexible land use designations to support a range of mixed-use, commercial, and aviation-supportive projects. Together, these sites offer developers a rare opportunity to deliver integrated, phased development that bridges public-facing commercial activity with expanding airside and industrial operations, capitalizing on both scale and connectivity.



SCAN ME for more information about this property
<https://sacramento.aero/mhr>