

**Sacramento International Airport**  
**Airline Passenger Statistics**  
**June 2012**

	CURRENT MONTH			FISCAL YEAR TO DATE			CALENDAR YEAR TO DATE		
	THIS YEAR	LAST YEAR	% +/- (-)	2011/12	2010/11	% +/- (-)	2012	2011	% +/- (-)
<b>Enplaned</b>									
<b>Domestic</b>									
Alaska / Horizon	33,994	34,218	(0.7%)	360,168	361,237	(0.3%)	176,457	170,021	3.8%
American Airlines	20,805	21,305	(2.3%)	238,469	201,497	18.3%	114,974	104,190	10.4%
Delta Airlines / Delta Connection	40,377	41,390	(2.4%)	409,223	376,563	8.7%	185,611	177,884	4.3%
Express Jet/Delta Connection	-	-	-	1,472	-	-	-	-	-
Frontier Airlines	12,403	15,769	(21.3%)	124,788	134,887	(7.5%)	50,263	61,032	(17.6%)
Hawaiian Airlines	7,405	7,451	(0.6%)	87,059	86,557	0.6%	43,291	42,854	1.0%
Jet Blue	16,532	11,044	49.7%	156,845	112,389	39.6%	81,837	55,404	47.7%
Mesa/US Airways Express/YV	-	-	-	-	5,125	(100.0%)	-	3,472	(100.0%)
Southwest	198,756	201,218	(1.2%)	2,243,558	2,319,462	(3.3%)	1,115,554	1,136,037	(1.8%)
United / Continental / Express	49,055	57,737	(15.0%)	579,768	634,658	(8.6%)	272,466	305,611	(10.8%)
US Airways	25,570	25,992	(1.6%)	231,412	230,241	0.5%	113,876	103,748	9.8%
CHARTER	-	-	-	-	-	-	-	-	-
	<b>404,897</b>	<b>416,124</b>	<b>(2.7%)</b>	<b>4,432,762</b>	<b>4,462,616</b>	<b>(0.7%)</b>	<b>2,154,329</b>	<b>2,160,253</b>	<b>(0.3%)</b>
<b>International</b>									
AeroMexico	3,091	-	-	27,970	-	-	11,730	-	-
Alaska / Horizon	1,788	1,878	(4.8%)	18,572	11,530	61.1%	9,786	10,555	(7.3%)
Frontier Airlines	-	-	-	699	-	-	699	-	-
Mexicana	-	-	-	-	5,595	(100.0%)	-	-	-
	<b>4,879</b>	<b>1,878</b>	<b>159.8%</b>	<b>47,241</b>	<b>17,125</b>	<b>175.9%</b>	<b>22,215</b>	<b>10,555</b>	<b>110.5%</b>
<b>Total Enplaned</b>	<b>409,776</b>	<b>418,002</b>	<b>(2.0%)</b>	<b>4,480,003</b>	<b>4,479,741</b>	<b>0.0%</b>	<b>2,176,544</b>	<b>2,170,808</b>	<b>0.3%</b>
<b>Deplaned</b>									
<b>Domestic</b>									
Alaska / Horizon	32,631	32,652	(0.1%)	363,189	363,884	(0.2%)	174,548	167,974	3.9%
American Airlines	20,674	21,013	(1.6%)	239,756	204,640	17.2%	115,813	105,775	9.5%
Delta Airlines / Delta Connection	38,584	39,742	(2.9%)	394,073	364,311	8.2%	178,851	172,433	3.7%
Express Jet/Delta Connection	-	-	-	1,370	-	-	-	-	-
Frontier Airlines	11,920	15,559	(23.4%)	122,667	130,645	(6.1%)	48,086	59,676	(19.4%)
Hawaiian Airlines	7,215	7,118	1.4%	86,635	86,438	0.2%	43,410	42,988	1.0%
Jet Blue	15,996	10,695	49.6%	154,568	112,784	37.0%	80,808	54,850	47.3%
Mesa/US Airways Express/YV	-	-	-	-	3,853	(100.0%)	-	2,696	(100.0%)
Southwest	196,791	199,556	(1.4%)	2,248,494	2,326,866	(3.4%)	1,115,131	1,138,993	(2.1%)
United / Continental / Express	48,774	55,181	(11.6%)	573,498	628,150	(8.7%)	269,078	298,742	(9.9%)
US Airways	24,320	24,526	(0.8%)	229,077	230,183	(0.5%)	112,578	103,119	9.2%
CHARTER	-	-	-	-	-	-	-	-	-
	<b>396,905</b>	<b>406,042</b>	<b>(2.3%)</b>	<b>4,413,327</b>	<b>4,451,754</b>	<b>(0.9%)</b>	<b>2,138,303</b>	<b>2,147,246</b>	<b>(0.4%)</b>
<b>International</b>									
AeroMexico	2,059	-	-	26,898	-	-	12,725	-	-
Alaska / Horizon	1,659	1,714	(3.2%)	18,000	11,637	54.7%	10,012	10,591	(5.5%)
Frontier Airlines	-	-	-	595	-	-	595	-	-
Mexicana	-	-	-	-	4,055	(100.0%)	-	-	-
	<b>3,718</b>	<b>1,714</b>	<b>116.9%</b>	<b>45,493</b>	<b>15,692</b>	<b>189.9%</b>	<b>23,332</b>	<b>10,591</b>	<b>120.3%</b>
<b>Total Deplaned</b>	<b>400,623</b>	<b>407,756</b>	<b>(1.7%)</b>	<b>4,458,820</b>	<b>4,467,446</b>	<b>(0.2%)</b>	<b>2,161,635</b>	<b>2,157,837</b>	<b>0.2%</b>
<b>ENPLANED AND DEPLANED PASSENGERS</b>	<b>810,399</b>	<b>825,758</b>	<b>(1.9%)</b>	<b>8,938,823</b>	<b>8,947,187</b>	<b>(0.1%)</b>	<b>4,338,179</b>	<b>4,328,645</b>	<b>0.2%</b>

# Sacramento County Airport System

## Summary of Activity

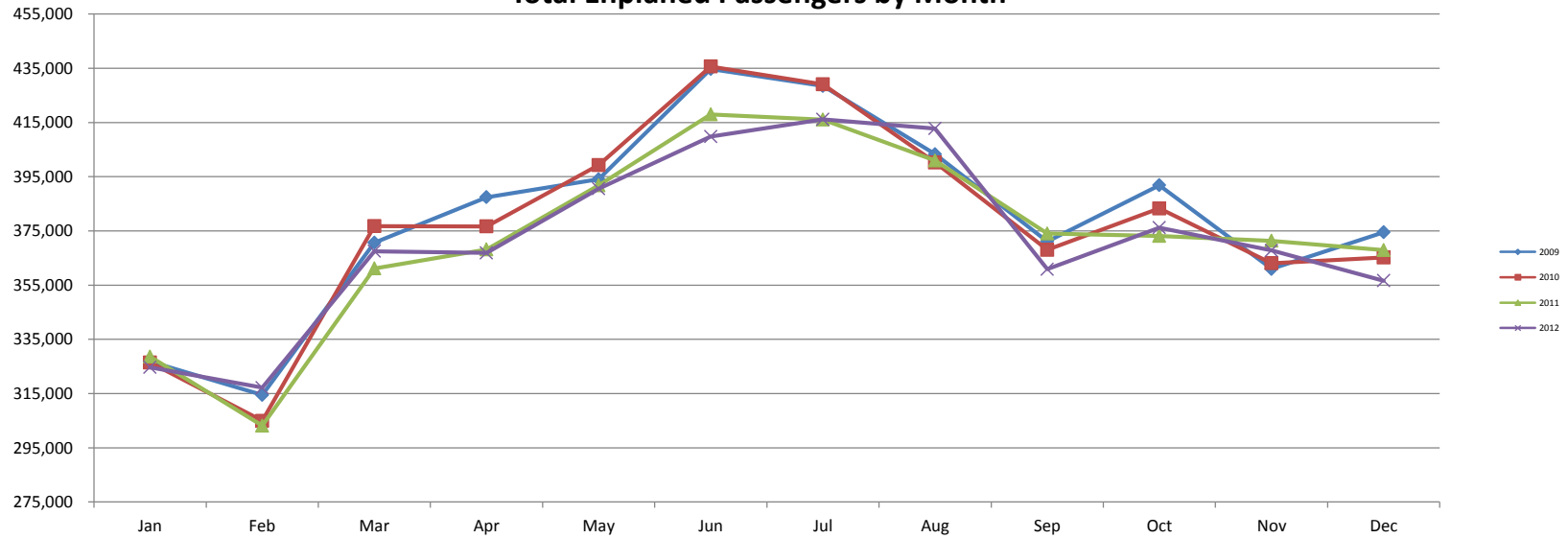
### June 2012

	CURRENT MONTH			FISCAL YEAR TO DATE			CALENDAR YEAR TO DATE		
	THIS YEAR	LAST YEAR	% + / (-)	2011/12	2010/11	% + / (-)	2012	2011	% + / (-)
<b>Sacramento International Airport</b>									
<b>Passengers</b>									
Enplaned	409,776	396,697	3.3%	4,393,669	4,278,244	2.7%	2,175,866	2,066,618	5.3%
Deplaned	400,623	386,743	3.6%	4,372,945	4,262,706	2.6%	2,161,401	2,051,962	5.3%
	<b>810,399</b>	<b>783,440</b>	<b>3.4%</b>	<b>8,766,614</b>	<b>8,540,950</b>	<b>2.6%</b>	<b>4,337,267</b>	<b>4,118,580</b>	<b>5.3%</b>
<b>Landings</b>									
Landed Weight (1,000 pounds)	489,156	474,337	3.1%	5,549,556	5,441,116	2.0%	2,768,659	2,645,920	4.6%
# of Landings	4,249	4,114	3.3%	49,601	47,593	4.2%	25,166	23,308	8.0%
<b>Airmail (Pounds)</b>									
On	267,559	177,408	50.8%	2,408,845	1,466,193	64.3%	1,481,590	1,077,915	37.4%
Off	216,948	4,004	5318.3%	1,049,994	79,228	1225.3%	850,182	41,605	1943.5%
	<b>484,507</b>	<b>181,412</b>	<b>167.1%</b>	<b>3,458,839</b>	<b>1,545,421</b>	<b>123.8%</b>	<b>2,331,772</b>	<b>1,119,520</b>	<b>108.3%</b>
<b>Freight (Pounds)</b>									
On	5,695,132	5,568,952	2.3%	68,045,640	65,802,861	3.4%	34,154,907	30,637,739	11.5%
Off	6,230,787	6,487,598	(4.0%)	75,595,333	78,242,742	(3.4%)	36,428,435	37,957,316	(4.0%)
	<b>11,925,919</b>	<b>12,056,550</b>	<b>(1.1%)</b>	<b>143,640,973</b>	<b>144,045,603</b>	<b>(0.3%)</b>	<b>70,583,342</b>	<b>68,595,055</b>	<b>2.9%</b>
<b>Aircraft Operations</b>									
Air Carrier	6,917	7,218	(4.2%)	81,194	77,131	5.3%	39,371	40,750	(3.4%)
Air Taxi	1,684	1,630	3.3%	20,520	15,792	29.9%	10,346	9,053	14.3%
General Aviation	946	1,002	(5.6%)	11,023	11,307	(2.5%)	5,260	5,286	(0.5%)
Military	612	364	68.1%	6,317	2,724	131.9%	3,386	1,722	96.6%
	<b>10,159</b>	<b>10,214</b>	<b>(0.5%)</b>	<b>119,054</b>	<b>106,954</b>	<b>11.3%</b>	<b>58,363</b>	<b>56,811</b>	<b>2.7%</b>
<b>Mather Airport</b>									
<b>Passengers</b>									
Enplaned	12	2	500.0%	61	104	(41.3%)	29	47	(38.3%)
Deplaned	12	8	50.0%	66	107	(38.3%)	27	58	(53.4%)
	<b>24</b>	<b>10</b>	<b>140.0%</b>	<b>127</b>	<b>211</b>	<b>(39.8%)</b>	<b>56</b>	<b>105</b>	<b>(46.7%)</b>
<b>Landings</b>									
Landed Weight (1,000 pounds)	28,658	26,011	10.2%	319,934	306,945	4.2%	154,817	147,185	5.2%
# of Landings	237	243	(2.5%)	2,914	2,923	(0.3%)	1,416	1,407	0.6%
<b>Freight (Pounds)</b>									
On	3,924,127	3,370,474	16.4%	47,715,594	37,778,786	26.3%	22,400,323	17,849,162	25.5%
Off	4,765,879	4,008,624	18.9%	56,338,843	46,457,084	21.3%	26,531,153	21,808,951	21.7%
	<b>8,690,006</b>	<b>7,379,098</b>	<b>17.8%</b>	<b>104,054,437</b>	<b>84,235,870</b>	<b>23.5%</b>	<b>48,931,476</b>	<b>39,658,113</b>	<b>23.4%</b>
<b>Operations</b>									
Air Carrier	380	372	2.2%	4,601	4,619	(0.4%)	2,149	2,218	(3.1%)
Air Taxi	1,000	978	2.2%	12,218	11,964	2.1%	6,346	6,143	3.3%
General Aviation	3,337	3,024	10.4%	37,549	33,760	11.2%	18,522	16,574	11.8%
Military	1,953	1,879	3.9%	25,514	16,815	51.7%	13,988	9,211	51.9%
	<b>6,670</b>	<b>6,253</b>	<b>6.7%</b>	<b>79,882</b>	<b>67,158</b>	<b>18.9%</b>	<b>41,005</b>	<b>34,146</b>	<b>20.1%</b>
<b>Sacramento Executive Airport</b>									
<b>Landings</b>									
Landed Weight (1,000 pounds)	508	-	0.0%	5,771	4,270	35.2%	2,981	2,344	27.2%
# of Landings	72	-	0.0%	834	624	33.7%	419	343	22.2%
<b>Freight (Pounds)</b>									
On	35,994	-	0.0%	443,170	345,922	28.1%	213,986	187,226	14.3%
Off	19,545	-	0.0%	235,426	186,399	26.3%	114,437	102,859	11.3%
	<b>55,539</b>	<b>-</b>	<b>0.0%</b>	<b>678,596</b>	<b>532,321</b>	<b>27.5%</b>	<b>328,423</b>	<b>290,085</b>	<b>13.2%</b>
<b>Operations</b>									
Air Taxi	179	322	(44.4%)	3,182	4,096	(22.3%)	1,272	1,981	(35.8%)
General Aviation	6,876	7,384	(6.9%)	88,466	85,807	3.1%	40,960	40,288	1.7%
Military	7	17	(58.8%)	174	134	29.9%	69	74	(6.8%)
	<b>7,063</b>	<b>7,723</b>	<b>(8.5%)</b>	<b>91,827</b>	<b>90,038</b>	<b>2.0%</b>	<b>42,305</b>	<b>42,344</b>	<b>(0.1%)</b>

## Sacramento International Airport Passenger Statistics Prior 12 Months

		Current Year		Prior Year		Year over Year Change			
		Enplaned	Deplaned	Enplaned	Deplaned	Enplaned	% Difference	Deplaned	% Difference
July	2011	416,058	417,780	429,059	431,041	(13,001)	-3.0%	(13,261)	-3.1%
August	2011	400,919	407,414	400,252	406,618	667	0.2%	796	0.2%
September	2011	374,065	366,107	368,037	359,953	6,028	1.6%	6,154	1.7%
October	2011	373,117	372,704	383,303	384,583	(10,186)	-2.7%	(11,879)	-3.1%
November	2011	371,344	366,452	363,075	363,608	8,269	2.3%	2,844	0.8%
December	2011	367,956	366,728	365,207	363,806	2,749	0.8%	2,922	0.8%
January	2012	324,651	324,637	328,597	328,773	(3,946)	-1.2%	(4,136)	-1.3%
February	2012	317,163	316,011	303,123	304,141	14,040	4.6%	11,870	3.9%
March	2012	367,519	361,734	361,148	359,843	6,371	1.8%	1,891	0.5%
April	2012	366,848	368,723	368,169	363,295	(1,321)	-0.4%	5,428	1.5%
May	2012	390,587	389,907	391,769	394,029	(1,182)	-0.3%	(4,122)	-1.0%
June	2012	409,776	400,623	418,002	407,756	(8,226)	-2.0%	(7,133)	-1.7%
		<b>4,480,003</b>	<b>4,458,820</b>	<b>4,479,741</b>	<b>4,467,446</b>	<b>262</b>	<b>0.0%</b>	<b>(8,626)</b>	<b>-0.2%</b>

### Total Enplaned Passengers by Month



**SACRAMENTO COUNTY AIRPORT SYSTEM  
SACRAMENTO INTERNATIONAL AIRPORT - SMF  
PASSENGERS BY YEAR**

YEAR	JANUARY	FEBRUARY	MARCH	APRIL	MAY	JUNE	JULY	AUGUST	SEPTEMBER	OCTOBER	NOVEMBER	DECEMBER	Y.T.D. TOTAL
1957													254,861
1958													269,869
1959													322,508
1960													339,657
1961													341,838
1962													360,312
1963	28,309	28,937	35,946	38,015	38,406	40,715	37,749	41,200	36,088	39,041	32,353	31,834	428,593
1964	34,273	33,167	39,247	38,142	40,017	43,231	45,350	46,888	44,246	45,699	40,294	44,029	494,583
1965	40,096	39,196	45,246	48,471	49,234	52,380	48,596	52,000	50,786	49,886	47,539	45,861	569,291
1966	48,107	44,658	53,254	55,461	57,102	64,383	37,576	41,831	56,325	56,195	53,905	58,702	627,499
1967	54,768	63,079	85,735	78,268	85,074	95,833	92,649	99,816	86,963	83,010	80,951	87,302	993,448
1968	74,371	73,458	87,996	93,969	95,121	108,249	102,837	112,578	90,356	87,990	86,060	96,417	1,109,402
1969	85,744	81,266	96,626	100,789	105,426	120,287	116,673	121,249	101,348	98,182	98,590	107,582	1,233,762
1970	97,861	86,453	111,188 e	100,219	114,958	127,485	125,932	132,155	108,174	103,115	104,297	118,474	1,330,311
1971	105,233	91,046	108,185	121,103 e	122,696	134,605	136,095	141,783	120,582	118,511	121,480	130,592	1,451,911
1972	111,601	113,374	137,464	130,920	141,027	156,292	151,523	157,790	130,211	129,905	135,458	146,266	1,641,831
1973	128,908	122,840	137,856	153,946 e	155,747	174,733	166,941	186,285	147,331	144,316	137,961	137,590	1,794,454
1974	137,012	135,515	163,601	169,135 e	169,362	178,288	170,581	190,205	147,187	145,136	139,208	158,028	1,903,258
1975	131,809	124,378	160,026 e	150,439	172,408	188,220	183,023	205,273	155,782	161,579	158,674	140,850	1,932,461
1976	149,215	144,649	163,341	185,438 e	189,071	199,606	203,181	213,585	172,837	177,264	179,985	195,122	2,173,294
1977	175,394	161,269	191,417	206,456 e	209,349	222,284	231,234	248,808	208,010	205,682	218,884	218,964	2,497,751
1978	200,519	185,968	234,405 e	220,707	246,777	260,288	252,338	277,053	225,399	223,518 f	231,153	231,255	2,789,380
1979	215,586	206,309	247,897	226,636 e	242,426	290,846	279,997	298,691	232,131	226,751	222,764	211,475	2,901,509
1980	184,084	173,712	201,406	195,091 e	202,770	217,395	210,532	219,682	173,004 b	156,612	158,757	173,567	2,266,612
1981	167,960	157,614	186,891	196,957 e	204,486	215,382	213,426	197,598 c	173,789	181,975	181,701	194,083	2,271,862
1982	176,839	167,462	196,928	204,715 e	211,670	218,916	207,330	239,957	204,125	215,983	197,057	208,582	2,449,564
1983	187,094	175,729	228,402	212,534 e	227,530	247,061	231,562	243,807	205,752	203,660	210,164	214,081	2,587,376
1984	186,203	178,304	209,276	221,114 e	238,176	248,148	232,273	251,260	208,495	219,492	218,062	214,596	2,625,399
1985	190,275	185,634	243,501	254,115 e	262,548 d	258,075	271,943	281,784	226,494	237,032	237,873	242,731	2,892,005
1986	221,923	209,593	279,349 e	281,708	313,875	327,555	323,030	353,111	290,431	297,853	280,671	289,136	3,468,235
1987	252,821	256,700	324,537	356,933 e	365,074	359,297	366,548	368,324	289,336	301,499	292,062	293,452	3,826,583
1988	277,698	273,127	328,004	312,519 e	344,205	342,742	334,950	357,330	296,726	307,509	298,381	288,026	3,761,217
1989	246,184	233,693	293,190 e	279,644	317,237	364,748	341,186	370,192	313,755	343,091	331,453	299,221	3,733,594
1990	269,813	253,717	300,303	302,605 e	320,916	339,720	333,760	360,379	293,552	303,894	284,319	268,813	3,631,791
1991	235,425	201,762	249,147 e	288,130	364,876	427,700	475,285	506,743	400,304	414,384	381,779	406,429	4,351,964
1992	340,549	332,144	395,467	410,891 e	438,029	504,731	526,479	542,818	420,447	409,741	397,255	406,443	5,124,994
1993	344,854	345,530	416,564	444,802 e	471,324	496,646	485,994	516,603	451,118	468,520	449,613	431,064	5,322,632
1994	376,225	372,571	454,618	457,593 e	494,492	526,957	556,857	581,167	500,514	539,171	531,983	535,748	5,927,896
1995	459,884	439,425	526,954	563,837 e	582,292	635,978	619,014	648,559	544,556	564,895	560,112	558,964	6,704,470
1996	481,074	484,829	574,196	575,425 e	609,441	644,117	628,325	665,609	571,727	641,594	519,846	589,601	6,985,784
1997	507,032	478,515	577,422 e	553,761	609,488	660,404	647,377	662,265	548,593	586,767	559,835	575,821	6,967,280
1998	483,621	482,705	582,794	621,494	643,967	672,293	671,943	670,663	566,273	605,832	599,203	600,590	7,201,378
1999	512,904	509,033	619,829	639,696	669,360	706,214	692,616	701,424	622,843	641,594	631,040	608,339	7,554,892

(MONTH-BY-MONTH STATISTICS NOT AVAILABLE FOR 1957-1962)

**SACRAMENTO COUNTY AIRPORT SYSTEM  
SACRAMENTO INTERNATIONAL AIRPORT - SMF  
PASSENGERS BY YEAR**

<u>YEAR</u>	<u>JANUARY</u>	<u>FEBRUARY</u>	<u>MARCH</u>	<u>APRIL</u>	<u>MAY</u>	<u>JUNE</u>	<u>JULY</u>	<u>AUGUST</u>	<u>SEPTEMBER</u>	<u>OCTOBER</u>	<u>NOVEMBER</u>	<u>DECEMBER</u>	<u>Y.T.D. TOTAL</u>
2000	531,856	541,673	630,838	654,975	703,975	745,933	736,200	746,983	637,799	685,712	674,762	644,340	7,935,046
2001	573,257	553,728	679,816	718,557	753,145	792,426	797,403	819,478	476,787 I	628,473	632,295	611,577	8,036,942
2002	568,844	553,198	686,748	702,597	773,818	817,079	803,474	825,311	665,206	719,852	678,001	716,796	8,510,924
2003	624,000	600,284	683,448	717,996	777,251	835,295	851,696	820,658	696,960	734,204	708,121	728,250	8,778,163
2004	614,700	636,343	760,218	820,754	841,176	902,422	919,688	893,985	769,060	820,983	796,627	804,766	9,580,722
2005	716,874	696,146	867,879	826,318	909,823	938,261	947,996	932,588	839,452	861,225	844,049	822,455	10,203,066
2006	741,265	713,008	849,165	863,109	911,344	969,411	948,365	926,692	823,950	885,524	871,952	859,015	10,362,800
2007	785,255	743,038	895,879	900,533	959,268	1,015,617	1,013,042	997,414	853,982	887,997	867,507	848,107	10,767,639
	Jan	Feb	Mar	Apr	May	Jun	Jul	Aug	Sep	Oct	Nov	Dec	0
2008	777,810	769,296	909,156	865,563	949,858	970,848	954,221	922,372	771,029	813,079	743,662	753,059	10,199,953
2009	655,861	630,004	743,445	773,245	790,615	857,554	855,632	816,393	735,483	782,368	726,150	745,527	9,112,277
2010	654,645	610,132	745,201	757,942	800,672	860,641	860,100	806,870 k	727,990	767,886	726,683	729,013	9,047,775
2011	657,370	607,264	720,991	731,464	785,798	825,758	833,838	808,333	740,172	745,821 L	737,796	734,684	8,929,289
2012	649,288	633,174	729,253	735,571	780,494	810,399	833,369	828,279	717,057	752,433	729,621	711,632	8,910,570
2013	635,546	599,523	730,006	709,487	772,052	802,096	795,129	768,809	-	-	-	-	5,812,648

**SACRAMENTO COUNTY AIRPORT SYSTEM  
SACRAMENTO INTERNATIONAL AIRPORT - SMF  
PASSENGERS BY YEAR**

YEAR	JANUARY	FEBRUARY	MARCH	APRIL	MAY	JUNE	JULY	AUGUST	SEPTEMBER	OCTOBER	NOVEMBER	DECEMBER	Y.T.D. TOTAL
<u>FOOTNOTES OF FACTORS AFFECTING TOTALS</u>				<u>SERVICE CHANGES, AIRLINE MERGERS AND ACQUISITIONS (SINCE APRIL 1985)</u>									
a)	Sacramento Metropolitan Airport opened 10/28/67.			America West began service 4/1/85.				Trans States ceased service 12/28/99					
b)	PSA strike, 9/25/80-11/16/80.			Horizon ceased service 1/31/88.				Continental began service 5/2/00.					
c)	Air Traffic Controllers strike began 8/3/81.			Continental began service 8/1/86.				Mather Airport Air Traffic Control Tower began 8/1/00.					
d)	United Airlines strike (pilots) 5/17/85-6/18/85.			Frontier ceased service 8/24/86.				Kitty Hawk & Polar Air ceased MHR service 8/31/01.					
e)	Easter			Republic merged into Northwest 10/1/86.				Air Wisconsin began service October, 2001.					
f)	Start of airline deregulation, 10/78.			Continental merged with Frontier 10/17/86.				Frontier Airlines began service March 1, 2002					
g)	Nationwide economic recession approximately 1980-1982.			Western merged into Delta 4/1/87.				Hawaiian Airlines began service June 7, 2002					
h)	Nationwide economic recession and Persian Gulf War, 1990-91.			AirCal merged into American 7/1/87.				Air Wisconsin ceased service June, 2002.					
i)	World Trade Center Disaster September 11, 2001.			PSA merged with USAir 4/8/88.				Mexicana Airlines began service July 1, 2002					
j)	Nationwide economic recession approximately 2008-2010			Qwest Began service 3/21/88.				Aloha Airlines began service April 18, 2003					
k)	Mexicana Airlines stops all flights			Qwest ceased service 8/2/88.				Mesa Airlines began service October, 2003					
L)	New Central Terminal B opens			Stateswest began service 8/15/90.				JetBlue Airways began service February, 2004					
				Southwest began service 6/17/91.				ASA/Delta Connection began service January, 2005					
				Morris Air (Charter) " 12/17/92.				Martinaire Partners, L.P. began Service November, 2005					
				Alaska Air began service 7/12/93.				Union Flights Ceased Service October 2005					
				AmerEagle ceased service 9/11/93.				Aloha Airlines moved from T-B2 to T-B1 effective April 14,2006.					
				Continental ceased service 12/16/93.				Jetblue moved from T-A to T-B2 effective April 28, 2006					
				USAir ceased service 1/5/94.				Pacific Coast Jet Charter began service July, 2006					
				Trans States began service 1/5/94.				Continental Airlines moved from T-A to T B-2 effective October 1, 2006					
				Horizon began service 4/3/94.				US Airways merged with America West					
				TWA began service 6/16/94.				Frontier Airlines began International service March 3, 2007					
				Morris merged with Southwest 9/94.				Express Jet began service April 2007					
				Shuttle By United began service 10/1/94.				Air Canada JAZZ began service June 15, 2007					
				Reno Air Express began service 2/15/95.				Frontier Airlines					
				Reno Air Express ceased service 3/6/95.				Aloha airlines filed Bankruptcy in Mar 31, 2008 <b>NO REPORT</b>					
				Rich Int'l began service 6/10/95.				Express Jet ceased operation					
				Sierra Expressway began svc 8/19/95.				MESA ceased operation in March 2008					
				Rich Int'l ceased service 8/27/95.				Air -Canada pulled out of SMF October 30, 2008					
				Sierra Expressway ceased service 2/16/96.				Delta/Northwest merger between these airlines Marach 2009					
				Rich Int'l began service 6/14/96.				Mesaba/Delta Connection started on September 2011 (Commuter)					
				Rich Int'l ceased service 8/30/96.				Alaska International discontinued flights to Mexico 8/26/12					
				Delta Connection/Skywest ceased service 10/1/97				Volaris begins flights at Sac Intl. November 2012					
				Terminal A opened 10/26/98				Frontier Airlines Ceased Service in January 2013					
				Winair began operations 11/2/98									
				Winair ceased service 7/7/99									
				Pacific Skyway began operations 10/1/99									