



MATHER AIRPORT

STANDARD OPERATING PROCEDURES

Standard Traffic Pattern altitude is as follows:

1096 feet MSL piston aircraft

1896 feet MSL turbine aircraft

Normal traffic pattern flow is as follows:

Runway 22L – left traffic

Runway 22R – right traffic

Runway 4R – right traffic

Runway 4L – left traffic

Runways 22L and 22R are the designated calm wind runways

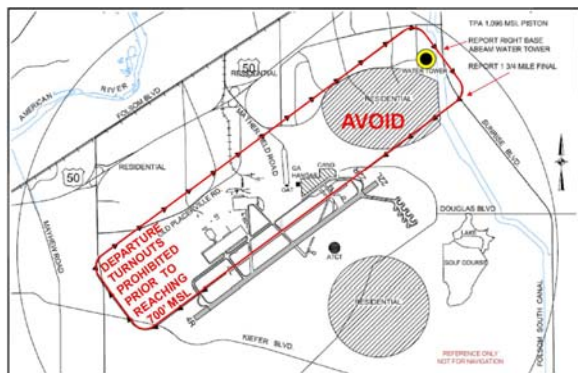
If traffic allows, turbojet aircraft will use left traffic for Runway 22R

If traffic allows, turbojet aircraft will use right traffic for Runway 4L

VFR turbojet aircraft departing north or northwest from the centerline of the runway will begin turns at or above 1,100 feet MSL

VFR piston aircraft departing the traffic pattern shall not make turns prior to reaching 700 feet MSL.

SEE INSIDE FOR LARGE SCALE RUNWAY 22R TRAFFIC PATTERN PROCEDURES GRAPHIC

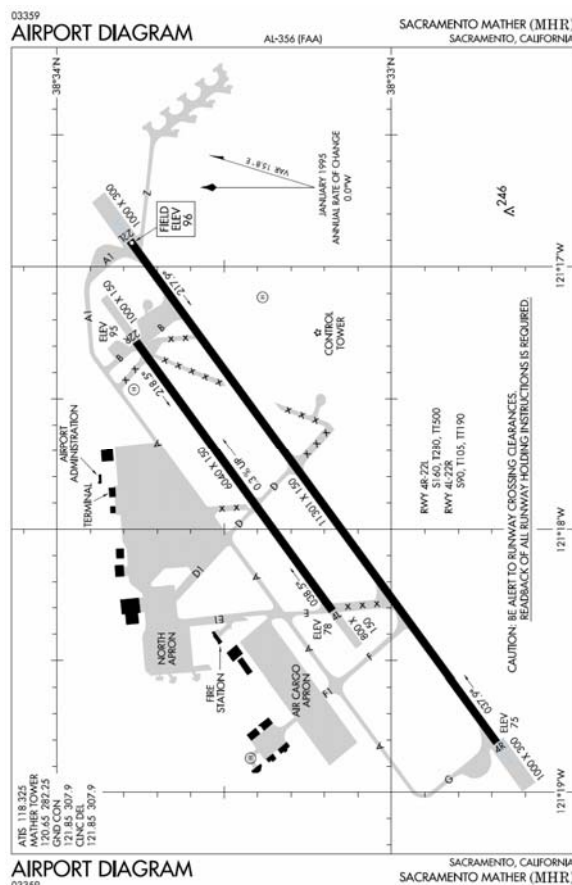


RWY 22R TRAFFIC PROCEDURES ✈ **MHR**

OCT-2006

NOISE SENSITIVE AREAS EXTEND MANY MILES BEYOND NORMAL TRAFFIC PATTERN BOUNDARIES AT MATHER AIRPORT.

PLEASE FOLLOW ALL NOISE ABATEMENT PROCEDURES.



Pilot Information Line

916-874-0359

Aircraft Noise Information Office

916-874-0704



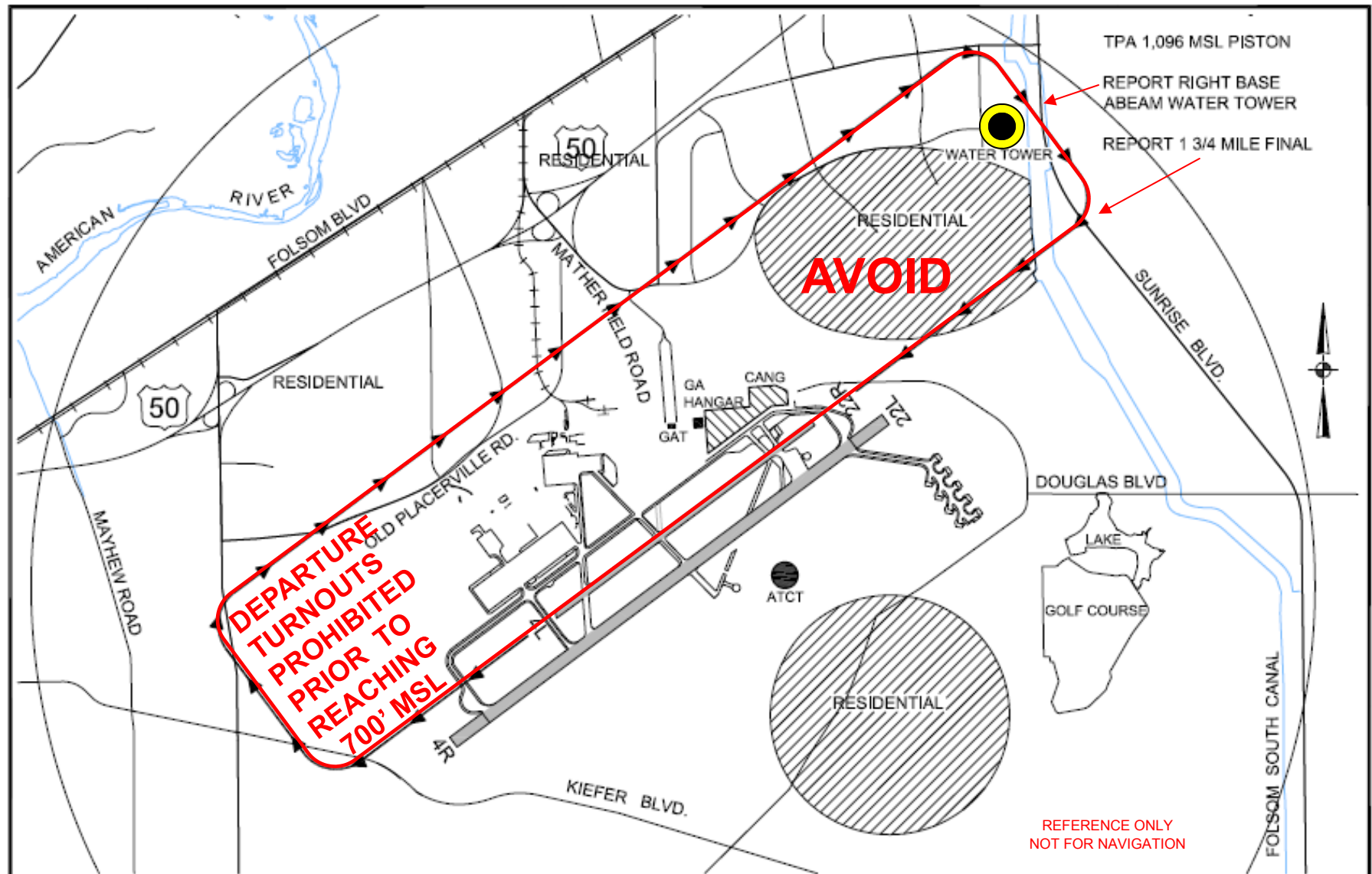
www.sacairports.org

SAFETY FIRST! PILOT IN COMMAND IS RESPONSIBLE FOR THE SAFE OPERATION OF HIS/HER AIRCRAFT.

OCT-2006

Runway 22R Traffic Pattern

OCT-2006



RWY 22R Traffic Pattern as reviewed and approved by FAA

SACRAMENTO MATHER AIRPORT
22R FLIGHT TRAFFIC PATTERN
(UNLESS OTHERWISE DIRECTED BY ATC)