

Sacramento International Airport Airline Passenger Statistics August 2013

	CURRENT MONTH			FISCAL YEAR TO DATE			CALENDAR YEAR TO DATE		
	THIS YEAR	LAST YEAR	% + / (-)	2013/14	2012/13	% + / (-)	2013	2012	% + / (-)
Enplaned									
Domestic									
Alaska / Horizon	32,958	33,675	(2.1%)	67,577	69,289	(2.5%)	235,052	245,746	(4.4%)
American Airlines	21,022	20,848	0.8%	42,356	40,554	4.4%	166,290	155,528	6.9%
Delta Airlines / Delta Connection	41,271	41,913	(1.5%)	86,205	86,284	(0.1%)	279,249	271,895	2.7%
Frontier Airlines	-	10,175	(100.0%)	-	25,359	(100.0%)	1,625	75,622	(97.9%)
Hawaiian Airlines	7,039	7,189	(2.1%)	14,544	14,640	(0.7%)	57,838	57,931	(0.2%)
Jet Blue	12,169	15,335	(20.6%)	24,740	31,672	(21.9%)	90,266	113,509	(20.5%)
Southwest	195,753	206,516	(5.2%)	393,181	404,834	(2.9%)	1,534,984	1,520,388	1.0%
United / Continental / Express	47,053	48,640	(3.3%)	94,262	96,837	(2.7%)	346,580	369,303	(6.2%)
US Airways	20,023	24,718	(19.0%)	45,442	50,207	(9.5%)	160,460	164,083	(2.2%)
CHARTER	106	217	(51.2%)	187	873	(78.6%)	3,019	873	245.8%
	377,394	409,226	(7.8%)	768,494	820,549	(6.3%)	2,875,363	2,974,878	(3.3%)
International									
AeroMexico	2,047	2,362	(13.3%)	4,999	5,596	(10.7%)	18,097	17,326	4.4%
Alaska / Horizon	-	1,148	(100.0%)	-	2,747	(100.0%)	-	12,533	(100.0%)
Frontier Airlines	-	-		-	-		-	699	(100.0%)
Volaris	2,287	-		4,673	-		14,568	-	
	4,334	3,510	23.5%	9,672	8,343	15.9%	32,665	30,558	6.9%
Total Enplaned	381,728	412,736	(7.5%)	778,166	828,892	(6.1%)	2,908,028	3,005,436	(3.2%)
Deplaned									
Domestic									
Alaska / Horizon	34,633	36,183	(4.3%)	68,736	71,903	(4.4%)	232,280	246,451	(5.8%)
American Airlines	21,458	20,920	2.6%	43,229	41,538	4.1%	169,753	157,351	7.9%
Delta Airlines / Delta Connection	41,573	41,539	0.1%	86,369	84,809	1.8%	275,494	263,660	4.5%
Frontier Airlines	-	9,904	(100.0%)	-	25,393	(100.0%)	1,635	73,479	(97.8%)
Hawaiian Airlines	7,445	7,448	(0.0%)	14,964	14,744	1.5%	58,932	58,154	1.3%
Jet Blue	12,101	15,112	(19.9%)	24,816	30,902	(19.7%)	88,835	111,710	(20.5%)
Southwest	196,779	207,424	(5.1%)	394,839	407,321	(3.1%)	1,539,958	1,522,452	1.1%
United / Continental / Express	46,577	48,296	(3.6%)	94,305	96,375	(2.1%)	336,197	365,453	(8.0%)
US Airways	20,887	23,862	(12.5%)	46,767	49,223	(5.0%)	161,526	161,801	(0.2%)
CHARTER	106	214	(50.5%)	187	648	(71.1%)	3,115	648	380.7%
	381,559	410,902	(7.1%)	774,212	822,856	(5.9%)	2,867,725	2,961,159	(3.2%)
International									
AeroMexico	2,546	3,199	(20.4%)	5,877	6,754	(13.0%)	19,951	19,479	2.4%
Alaska / Horizon	-	1,442	(100.0%)	-	3,146	(100.0%)	-	13,158	(100.0%)
Frontier Airlines	-	-		-	-		-	595	(100.0%)
Volaris	2,976	-		5,683	-		16,944	-	
	5,522	4,641	19.0%	11,560	9,900	16.8%	36,895	33,232	11.0%
Total Deplaned	387,081	415,543	(6.8%)	785,772	832,756	(5.6%)	2,904,620	2,994,391	(3.0%)
ENPLANED AND DEPLANED PASSENGERS	768,809	828,279	(7.2%)	1,563,938	1,661,648	(5.9%)	5,812,648	5,999,827	(3.1%)

Sacramento County Airport System

Summary of Activity

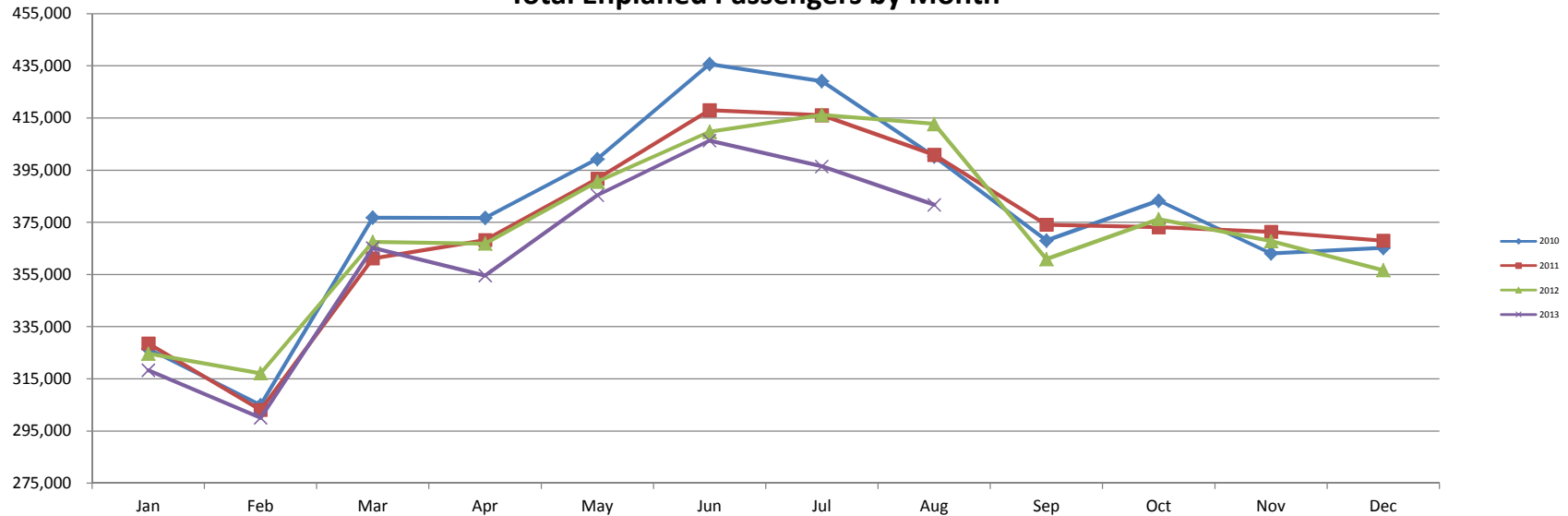
August 2013

	CURRENT MONTH			FISCAL YEAR TO DATE			CALENDAR YEAR TO DATE		
	THIS YEAR	LAST YEAR	% +/- (-)	2013/14	2012/13	% +/- (-)	2013	2012	% +/- (-)
Sacramento International Airport									
Passengers									
Enplaned	381,728	412,736	(7.5%)	778,166	828,892	(6.1%)	2,908,028	3,005,436	(3.2%)
Deplaned	387,081	415,543	(6.8%)	785,772	832,756	(5.6%)	2,904,620	2,994,391	(3.0%)
	768,809	828,279	(7.2%)	1,563,938	1,661,648	(5.9%)	5,812,648	5,999,827	(3.1%)
Landings									
Landed Weight (1,000 pounds)	465,719	493,306	(5.6%)	946,431	991,762	(4.6%)	3,595,299	3,694,968	(2.7%)
# of Landings	4,150	4,288	(3.2%)	8,360	8,623	(3.0%)	31,762	32,561	(2.5%)
Airmail (Pounds)									
On	489,256	354,374	38.1%	925,792	760,966	21.7%	2,502,368	2,242,556	11.6%
Off	186,185	203,225	(8.4%)	364,668	371,844	(1.9%)	1,418,310	1,221,999	16.1%
	675,441	557,599	21.1%	1,290,460	1,132,810	13.9%	3,920,678	3,464,555	13.2%
Freight (Pounds)									
On	6,149,479	5,966,751	3.1%	11,979,418	11,498,535	4.2%	45,737,839	45,653,442	0.2%
Off	6,196,867	6,509,582	(4.8%)	11,851,995	12,491,714	(5.1%)	49,644,505	48,920,149	1.5%
	12,346,346	12,476,333	(1.0%)	23,831,413	23,990,249	(0.7%)	95,382,344	94,573,591	0.9%
Aircraft Operations									
Air Carrier	7,008	7,355	(4.7%)	14,221	14,761	(3.7%)	53,142	54,132	(1.8%)
Air Taxi	1,508	1,473	2.4%	2,897	2,985	(2.9%)	11,316	13,331	(15.1%)
General Aviation	885	1,292	(31.5%)	1,784	2,430	(26.6%)	5,904	7,690	(23.2%)
Military	397	464	(14.4%)	795	1,081	(26.5%)	2,985	4,467	(33.2%)
	9,798	10,584	(7.4%)	19,697	21,257	(7.3%)	73,347	79,620	(7.9%)
Mather Airport									
Passengers									
Enplaned	13	14	(7.1%)	20	27	(25.9%)	50	58	(13.8%)
Deplaned	14	11	27.3%	21	24	(12.5%)	119	53	124.5%
	27	25	8.0%	41	51	(19.6%)	169	111	52.3%
Landings									
Landed Weight (1,000 pounds)	29,963	31,693	(5.5%)	56,963	58,306	(2.3%)	229,849	213,067	7.9%
# of Landings	246	260	(5.4%)	481	486	(1.0%)	1,916	1,902	0.7%
Freight (Pounds)									
On	4,250,350	4,098,155	3.7%	8,179,276	7,840,383	4.3%	31,242,552	30,240,706	3.3%
Off	5,527,641	5,212,245	6.1%	10,053,725	9,791,462	2.7%	38,854,292	36,322,615	7.0%
	9,777,991	9,310,400	5.0%	18,233,001	17,631,845	3.4%	70,096,844	66,563,321	5.3%
Operations									
Air Carrier	356	394	(9.6%)	700	732	(4.4%)	2,860	2,881	(0.7%)
Air Taxi	968	1,101	(12.1%)	1,980	1,983	(0.2%)	7,290	8,329	(12.5%)
General Aviation	3,398	3,741	(9.2%)	6,886	7,153	(3.7%)	23,725	25,675	(7.6%)
Military	2,615	2,394	9.2%	4,659	4,130	12.8%	16,828	18,118	(7.1%)
	7,337	7,630	(3.8%)	14,225	13,998	1.6%	50,703	55,003	(7.8%)
Sacramento Executive Airport									
Landings									
Landed Weight (1,000 pounds)	366	533	(31.4%)	713	1,016	(29.9%)	3,724	4,008	(7.1%)
# of Landings	51	75	(32.0%)	100	144	(30.6%)	526	563	(6.6%)
Freight (Pounds)									
On	24,753	38,438	(35.6%)	48,693	73,327	(33.6%)	225,170	287,313	(21.6%)
Off	8,323	18,994	(56.2%)	15,993	36,224	(55.8%)	89,036	150,661	(40.9%)
	33,076	57,432	(42.4%)	64,686	109,551	(41.0%)	314,206	437,974	(28.3%)
Operations									
Air Carrier	-	-	0.0%	10	-	0.0%	14	4	250.0%
Air Taxi	407	162	151.2%	809	321	152.0%	2,685	1,593	68.5%
General Aviation	7,603	7,158	6.2%	14,713	15,002	(1.9%)	55,276	55,962	(1.2%)
Military	27	1	2600.0%	40	5	700.0%	180	74	143.2%
	8,037	7,321	9.8%	15,572	15,328	1.6%	58,155	57,633	0.9%

Sacramento International Airport Passenger Statistics Prior 12 Months

		Current Year		Prior Year		Year over Year Change			
		Enplaned	Deplaned	Enplaned	Deplaned	Enplaned	% Difference	Deplaned	% Difference
September	2012	360,875	356,182	374,065	366,107	(13,190)	-3.5%	(9,925)	-2.7%
October	2012	376,199	376,234	373,117	372,704	3,082	0.8%	3,530	0.9%
November	2012	367,793	361,828	371,344	366,452	(3,551)	-1.0%	(4,624)	-1.3%
December	2012	356,647	354,985	367,956	366,728	(11,309)	-3.1%	(11,743)	-3.2%
January	2013	318,287	317,259	324,651	324,637	(6,364)	-2.0%	(7,378)	-2.3%
February	2013	300,061	299,462	317,163	316,011	(17,102)	-5.4%	(16,549)	-5.2%
March	2013	365,173	364,833	367,519	361,734	(2,346)	-0.6%	3,099	0.9%
April	2013	354,622	354,865	366,848	368,723	(12,226)	-3.3%	(13,858)	-3.8%
May	2013	385,410	386,642	390,587	389,907	(5,177)	-1.3%	(3,265)	-0.8%
June	2013	406,309	395,787	409,776	400,623	(3,467)	-0.8%	(4,836)	-1.2%
July	2013	396,438	398,691	416,156	417,213	(19,718)	-4.7%	(18,522)	-4.4%
August	2013	381,728	387,081	412,736	415,543	(31,008)	-7.5%	(28,462)	-6.8%
		4,369,542	4,353,849	4,491,918	4,466,382	(122,376)	-2.7%	(112,533)	-2.5%

Total Enplaned Passengers by Month



**SACRAMENTO COUNTY AIRPORT SYSTEM
SACRAMENTO INTERNATIONAL AIRPORT - SMF
PASSENGERS BY YEAR**

<u>YEAR</u>	<u>JANUARY</u>	<u>FEBRUARY</u>	<u>MARCH</u>	<u>APRIL</u>	<u>MAY</u>	<u>JUNE</u>	<u>JULY</u>	<u>AUGUST</u>	<u>SEPTEMBER</u>	<u>OCTOBER</u>	<u>NOVEMBER</u>	<u>DECEMBER</u>	<u>Y.T.D. TOTAL</u>
1957													254,861
1958													269,869
1959													322,508
1960													339,657
1961													341,838
1962													360,312
1963	28,309	28,937	35,946	38,015	38,406	40,715	37,749	41,200	36,088	39,041	32,353	31,834	428,593
1964	34,273	33,167	39,247	38,142	40,017	43,231	45,350	46,888	44,246	45,699	40,294	44,029	494,583
1965	40,096	39,196	45,246	48,471	49,234	52,380	48,596	52,000	50,786	49,886	47,539	45,861	569,291
1966	48,107	44,658	53,254	55,461	57,102	64,383	37,576	41,831	56,325	56,195	53,905	58,702	627,499
1967	54,768	63,079	85,735	78,268	85,074	95,833	92,649	99,816	86,963	83,010 a	80,951	87,302	993,448
1968	74,371	73,458	87,996	93,969	95,121	108,249	102,837	112,578	90,356	87,990	86,060	96,417	1,109,402
1969	85,744	81,266	96,626	100,789	105,426	120,287	116,673	121,249	101,348	98,182	98,590	107,582	1,233,762
1970	97,861	86,453	111,188 e	100,219	114,958	127,485	125,932	132,155	108,174	103,115	104,297	118,474	1,330,311
1971	105,233	91,046	108,185	121,103 e	122,696	134,605	136,095	141,783	120,582	118,511	121,480	130,592	1,451,911
1972	111,601	113,374	137,464	130,920 e	141,027	156,292	151,523	157,790	130,211	129,905	135,458	146,266	1,641,831
1973	128,908	122,840	137,856	153,946 e	155,747	174,733	166,941	186,285	147,331	144,316	137,961	137,590	1,794,454
1974	137,012	135,515	163,601	169,135 e	169,362	178,288	170,581	190,205	147,187	145,136	139,208	158,028	1,903,258
1975	131,809	124,378	160,026 e	150,439	172,408	188,220	183,023	205,273	155,782	161,579	158,674	140,850	1,932,461
1976	149,215	144,649	163,341	185,438 e	189,071	199,606	203,181	213,585	172,837	177,264	179,985	195,122	2,173,294
1977	175,394	161,269	191,417	206,456 e	209,349	222,284	231,234	248,808	208,010	205,682	218,884	218,964	2,497,751
1978	200,519	185,968	234,405 e	220,707	246,777	260,288	252,338	277,053	225,399	223,518 f	231,153	231,255	2,789,380
1979	215,586	206,309	247,897	226,636 e	242,426	290,846	279,997	298,691	232,131	226,751	222,764	211,475	2,901,509
1980	184,084	173,712	201,406	195,091 e	202,770	217,395	210,532	219,682	173,004 b	156,612	158,757	173,567	2,266,612
1981	167,960	157,614	186,891	196,957 e	204,486	215,382	213,426	197,598 c	173,789	181,975	181,701	194,083	2,271,862
1982	176,839	167,462	196,928	204,715 e	211,670	218,916	207,330	239,957	204,125	215,983	197,057	208,582	2,449,564
1983	187,094	175,729	228,402	212,534 e	227,530	247,061	231,562	243,807	205,752	203,660	210,164	214,081	2,587,376
1984	186,203	178,304	209,276	221,114 e	238,176	248,148	232,273	251,260	208,495	219,492	218,062	214,596	2,625,399
1985	190,275	185,634	243,501	254,115 e	262,548 d	258,075	271,943	281,784	226,494	237,032	237,873	242,731	2,892,005
1986	221,923	209,593	279,349 e	281,708	313,875	327,555	323,030	353,111	290,431	297,853	280,671	289,136	3,468,235
1987	252,821	256,700	324,537	356,933 e	365,074	359,297	366,548	368,324	289,336	301,499	292,062	293,452	3,826,583
1988	277,698	273,127	328,004	312,519 e	344,205	342,742	334,950	357,330	296,726	307,509	298,381	288,026	3,761,217
1989	246,184	233,693	293,190 e	279,644	317,237	364,748	341,186	370,192	313,755	343,091	331,453	299,221	3,733,594
1990	269,813	253,717	300,303	302,605 e	320,916	339,720	333,760	360,379	293,552	303,894	284,319	268,813	3,631,791
1991	235,425	201,762	249,147 e	288,130	364,876	427,700	475,285	506,743	400,304	414,384	381,779	406,429	4,351,964
1992	340,549	332,144	395,467	410,891 e	438,029	504,731	526,479	542,818	420,447	409,741	397,255	406,443	5,124,994
1993	344,854	345,530	416,564	444,802 e	471,324	496,646	485,994	516,603	451,118	468,520	449,613	431,064	5,322,632
1994	376,225	372,571	454,618	457,593 e	494,492	526,957	556,857	581,167	500,514	539,171	531,983	535,748	5,927,896
1995	459,884	439,425	526,954	563,837 e	582,292	635,978	619,014	648,559	544,556	564,895	560,112	558,964	6,704,470
1996	481,074	484,829	574,196	575,425 e	609,441	644,117	628,325	665,609	571,727	641,594	519,846	589,601	6,985,784
1997	507,032	478,515	577,422 e	553,761	609,488	660,404	647,377	662,265	548,593	586,767	559,835	575,821	6,967,280
1998	483,621	482,705	582,794	621,494	643,967	672,293	671,943	670,663	566,273	605,832	599,203	600,590	7,201,378
1999	512,904	509,033	619,829	639,696	669,360	706,214	692,616	701,424	622,843	641,594	631,040	608,339	7,554,892

(MONTH-BY-MONTH STATISTICS NOT AVAILABLE FOR 1957-1962)

**SACRAMENTO COUNTY AIRPORT SYSTEM
SACRAMENTO INTERNATIONAL AIRPORT - SMF
PASSENGERS BY YEAR**

<u>YEAR</u>	<u>JANUARY</u>	<u>FEBRUARY</u>	<u>MARCH</u>	<u>APRIL</u>	<u>MAY</u>	<u>JUNE</u>	<u>JULY</u>	<u>AUGUST</u>	<u>SEPTEMBER</u>	<u>OCTOBER</u>	<u>NOVEMBER</u>	<u>DECEMBER</u>	<u>Y.T.D. TOTAL</u>
2000	531,856	541,673	630,838	654,975	703,975	745,933	736,200	746,983	637,799	685,712	674,762	644,340	7,935,046
2001	573,257	553,728	679,816	718,557	753,145	792,426	797,403	819,478	476,787 I	628,473	632,295	611,577	8,036,942
2002	568,844	553,198	686,748	702,597	773,818	817,079	803,474	825,311	665,206	719,852	678,001	716,796	8,510,924
2003	624,000	600,284	683,448	717,996	777,251	835,295	851,696	820,658	696,960	734,204	708,121	728,250	8,778,163
2004	614,700	636,343	760,218	820,754	841,176	902,422	919,688	893,985	769,060	820,983	796,627	804,766	9,580,722
2005	716,874	696,146	867,879	826,318	909,823	938,261	947,996	932,588	839,452	861,225	844,049	822,455	10,203,066
2006	741,265	713,008	849,165	863,109	911,344	969,411	948,365	926,692	823,950	885,524	871,952	859,015	10,362,800
2007	785,255	743,038	895,879	900,533	959,268	1,015,617	1,013,042	997,414	853,982	887,997	867,507	848,107	10,767,639
	Jan	Feb	Mar	Apr	May	Jun	Jul	Aug	Sep	Oct	Nov	Dec	0
2008	777,810	769,296	909,156	865,563	949,858	970,848	954,221	922,372	771,029	813,079	743,662	753,059	10,199,953
2009	655,861	630,004	743,445	773,245	790,615	857,554	855,632	816,393	735,483	782,368	726,150	745,527	9,112,277
2010	654,645	610,132	745,201	757,942	800,672	860,641	860,100	806,870 k	727,990	767,886	726,683	729,013	9,047,775
2011	657,370	607,264	720,991	731,464	785,798	825,758	833,838	808,333	740,172	745,821 L	737,796	734,684	8,929,289
2012	649,288	633,174	729,253	735,571	780,494	810,399	833,369	828,279	717,057	752,433	729,621	711,632	8,910,570
2013	635,546	599,523	730,006	709,487	772,052	802,096	795,129	768,809	-	-	-	-	5,812,648

**SACRAMENTO COUNTY AIRPORT SYSTEM
SACRAMENTO INTERNATIONAL AIRPORT - SMF
PASSENGERS BY YEAR**

<u>YEAR</u>	<u>JANUARY</u>	<u>FEBRUARY</u>	<u>MARCH</u>	<u>APRIL</u>	<u>MAY</u>	<u>JUNE</u>	<u>JULY</u>	<u>AUGUST</u>	<u>SEPTEMBER</u>	<u>OCTOBER</u>	<u>NOVEMBER</u>	<u>DECEMBER</u>	<u>Y.T.D. TOTAL</u>
<u>FOOTNOTES OF FACTORS AFFECTING TOTALS</u>				<u>SERVICE CHANGES, AIRLINE MERGERS AND ACQUISITIONS (SINCE APRIL 1985)</u>									
a)	Sacramento Metropolitan Airport opened 10/28/67.			America West began service 4/1/85.			Trans States ceased service 12/28/99						
b)	PSA strike, 9/25/80-11/16/80.			Horizon ceased service 1/31/88.			Continental began service 5/2/00.						
c)	Air Traffic Controllers strike began 8/3/81.			Continental began service 8/1/86.			Mather Airport Air Traffic Control Tower began 8/1/00.						
d)	United Airlines strike (pilots) 5/17/85-6/18/85.			Frontier ceased service 8/24/86.			Kitty Hawk & Polar Air ceased MHR service 8/31/01.						
e)	Easter			Republic merged into Northwest 10/1/86.			Air Wisconsin began service October, 2001.						
f)	Start of airline deregulation, 10/78.			Continental merged with Frontier 10/17/86.			Frontier Airlines began service March 1, 2002						
g)	Nationwide economic recession approximately 1980-1982.			Western merged into Delta 4/1/87.			Hawaiian Airlines began service June 7, 2002						
h)	Nationwide economic recession and Persian Gulf War, 1990-91.			AirCal merged into American 7/1/87.			Air Wisconsin ceased service June, 2002.						
i)	World Trade Center Disaster September 11, 2001.			PSA merged with USAir 4/8/88.			Mexicana Airlines began service July 1, 2002						
j)	Nationwide economic recession approximately 2008-2010			Qwest Began service 3/21/88.			Aloha Airlines began service April 18, 2003						
k)	Mexicana Airlines stops all flights			Qwest ceased service 8/2/88.			Mesa Airlines began service October, 2003						
L)	New Central Terminal B opens			Stateswest began service 8/15/90.			JetBlue Airways began service February, 2004						
				Southwest began service 6/17/91.			ASA/Delta Connection began service January, 2005						
				Morris Air (Charter) " 12/17/92.			Martinaire Partners, L.P. began Service November, 2005						
				Alaska Air began service 7/12/93.			Union Flights Ceased Service October 2005						
				AmerEagle ceased service 9/11/93.			Aloha Airlines moved from T-B2 to T-B1 effective						
				Continental ceased service 12/16/93.			April 14,2006.						
				USAir ceased service 1/5/94.			Jetblue moved from T-A to T-B2 effective April 28, 2006						
				Trans States began service 1/5/94.			Pacific Coast Jet Charter began service July, 2006						
				Horizon began service 4/3/94.			Continental Airlines moved from T-A to T B-2 effective						
				TWA began service 6/16/94.			October 1, 2006						
				Morris merged with Southwest 9/94.			US Airways merged with America West						
				Shuttle By United began service 10/1/94.			Frontier Airlines began International service March 3, 2007						
				Reno Air Express began service 2/15/95.			Express Jet began service April 2007						
				Reno Air Express ceased service 3/6/95.			Air Canada JAZZ began service June 15, 2007						
				Rich Int'l began service 6/10/95.			Frontier						
				Sierra Expressway began svc 8/19/95.			Airlines						
				Rich Int'l ceased service 8/27/95.			Aloha airlines filed Bankruptcy in Mar 31, 2008			NO REPORT			
				Sierra Expressway ceased service 2/16/96.			Express Jet ceased operation						
				Rich Int'l began service 6/14/96.			MESA ceased operation in March 2008						
				Rich Int'l ceased service 8/30/96.			Air -Canada pulled out of SMF October 30, 2008						
				Delta Connection/Skywest ceased service 10/1/97			Delta/Northwest merger between these airlines Marach 2009						
				Terminal A opened 10/26/98			Mesaba/Delta Connection started on September 2011 (Commuter)						
				Winair began operations 11/2/98			Alaska International discontinued flights to Mexico 8/26/12						
				Winair ceased service 7/7/99			Volaris begins flights at Sac Intl. November 2012						
				Pacific Skyway began operations 10/1/99			Frontier Airlines Ceased Service in January 2013						