

## Sacramento International Airport Airline Passenger Statistics April 2012

	CURRENT MONTH			FISCAL YEAR TO DATE			CALENDAR YEAR TO DATE		
	THIS YEAR	LAST YEAR	% + / (-)	2011/12	2010/11	% + / (-)	2012	2011	% + / (-)
<b>Enplaned</b>									
<b>Domestic</b>									
Alaska Airlines	18,115	18,306	(1.0%)	194,615	187,180	4.0%	72,765	67,941	7.1%
American Airlines	19,162	19,500	(1.7%)	197,409	160,990	22.6%	73,914	63,683	16.1%
Continental Airlines	12,394	13,784	(10.1%)	122,147	135,954	(10.2%)	45,744	49,982	(8.5%)
Delta Airlines	26,060	24,592	6.0%	234,175	242,583	(3.5%)	68,636	75,551	(9.2%)
Express Jet/Delta Connection	-	-		1,472	-		-	-	
Frontier Airlines	6,485	9,207	(29.6%)	100,199	104,616	(4.2%)	25,674	30,761	(16.5%)
Hawaiian Airlines	7,137	7,126	0.2%	72,363	71,745	0.9%	28,595	28,042	2.0%
Horizon Air	10,712	9,602	11.6%	102,849	109,467	(6.0%)	40,988	37,490	9.3%
Jet Blue	14,305	9,079	57.6%	125,316	90,345	38.7%	50,308	33,360	50.8%
Mesa/US Airways Express/YV	-	724	(100.0%)	-	4,387	(100.0%)	-	2,734	(100.0%)
Skywest/Delta Connection	10,727	9,152	17.2%	100,522	57,433	75.0%	42,449	25,786	64.6%
Skywest/United Express	12,132	14,552	(16.6%)	128,467	148,532	(13.5%)	48,074	55,349	(13.1%)
Southwest	190,281	191,590	(0.7%)	1,849,805	1,921,173	(3.7%)	721,801	737,748	(2.2%)
United Airlines	20,023	24,587	(18.6%)	227,566	237,194	(4.1%)	77,060	87,302	(11.7%)
US Airways	15,903	14,639	8.6%	183,780	184,766	(0.5%)	66,244	58,273	13.7%
CHARTER	-	-		-	-		-	-	
	<b>363,436</b>	<b>366,440</b>	<b>(0.8%)</b>	<b>3,640,685</b>	<b>3,656,365</b>	<b>(0.4%)</b>	<b>1,362,252</b>	<b>1,354,002</b>	<b>0.6%</b>
<b>International</b>									
AeroMexico	2,007	-		23,199	-		6,959	-	
Alaska Airlines	1,405	1,729	(18.7%)	15,057	8,010	88.0%	6,271	7,035	(10.9%)
Frontier Airlines	-	-		699	-		699	-	
Mexicana	-	-		-	5,595	(100.0%)	-	-	
	<b>3,412</b>	<b>1,729</b>	<b>97.3%</b>	<b>38,955</b>	<b>13,605</b>	<b>186.3%</b>	<b>13,929</b>	<b>7,035</b>	<b>98.0%</b>
<b>Total Enplaned</b>	<b>366,848</b>	<b>368,169</b>	<b>(0.359%)</b>	<b>3,679,640</b>	<b>3,669,970</b>	<b>0.3%</b>	<b>1,376,181</b>	<b>1,361,037</b>	<b>1.1%</b>
<b>Deplaned</b>									
<b>Domestic</b>									
Alaska Airlines	17,982	18,178	(1.1%)	196,608	189,120	4.0%	72,015	68,152	5.7%
American Airlines	19,206	19,556	(1.8%)	198,432	164,072	20.9%	74,489	65,207	14.2%
Continental Airlines	12,635	13,427	(5.9%)	117,657	132,952	(11.5%)	43,925	48,968	(10.3%)
Delta Airlines	20,719	23,195	(10.7%)	219,768	233,042	(5.7%)	61,719	72,474	(14.8%)
Express Jet/Delta Connection	-	-		1,370	-		-	-	
Frontier Airlines	6,360	8,644	(26.4%)	98,953	100,788	(1.8%)	24,372	29,819	(18.3%)
Hawaiian Airlines	7,225	7,249	(0.3%)	71,925	71,744	0.3%	28,700	28,294	1.4%
Horizon Air	10,758	9,530	12.9%	106,299	112,616	(5.6%)	42,251	37,674	12.1%
Jet Blue	14,552	8,955	62.5%	123,935	91,718	35.1%	50,175	33,784	48.5%
Mesa/US Airways Express/YV	-	463	(100.0%)	-	3,323	(100.0%)	-	2,166	(100.0%)
Skywest/Delta Connection	10,738	8,832	21.6%	102,384	57,395	78.4%	45,211	26,085	73.3%
Skywest/United Express	12,158	14,358	(15.3%)	126,483	148,838	(15.0%)	46,217	54,234	(14.8%)
Southwest	195,472	191,180	2.2%	1,854,980	1,925,404	(3.7%)	721,617	737,531	(2.2%)
United Airlines	19,994	23,523	(15.0%)	228,127	237,125	(3.8%)	77,705	86,305	(10.0%)
US Airways	16,823	14,552	15.6%	183,132	185,172	(1.1%)	66,633	58,108	14.7%
	<b>364,622</b>	<b>361,642</b>	<b>0.8%</b>	<b>3,630,053</b>	<b>3,653,309</b>	<b>(0.6%)</b>	<b>1,355,029</b>	<b>1,348,801</b>	<b>0.5%</b>
<b>International</b>									
AeroMexico	2,496	-		22,938	-		8,765	-	
Alaska Airlines	1,605	1,653	(2.9%)	14,704	8,297	77.2%	6,716	7,251	(7.4%)
Frontier Airlines	-	-		595	-		595	-	
Mexicana	-	-		-	4,055	(100.0%)	-	-	
	<b>4,101</b>	<b>1,653</b>	<b>148.1%</b>	<b>38,237</b>	<b>12,352</b>	<b>209.6%</b>	<b>16,076</b>	<b>7,251</b>	<b>121.7%</b>
<b>Total Deplaned</b>	<b>368,723</b>	<b>363,295</b>	<b>1.5%</b>	<b>3,668,290</b>	<b>3,665,661</b>	<b>0.1%</b>	<b>1,371,105</b>	<b>1,356,052</b>	<b>1.1%</b>
<b>ENPLANED AND DEPLANED PASSENGERS</b>	<b>735,571</b>	<b>731,464</b>	<b>0.6%</b>	<b>7,347,930</b>	<b>7,335,631</b>	<b>0.2%</b>	<b>2,747,286</b>	<b>2,717,089</b>	<b>1.1%</b>

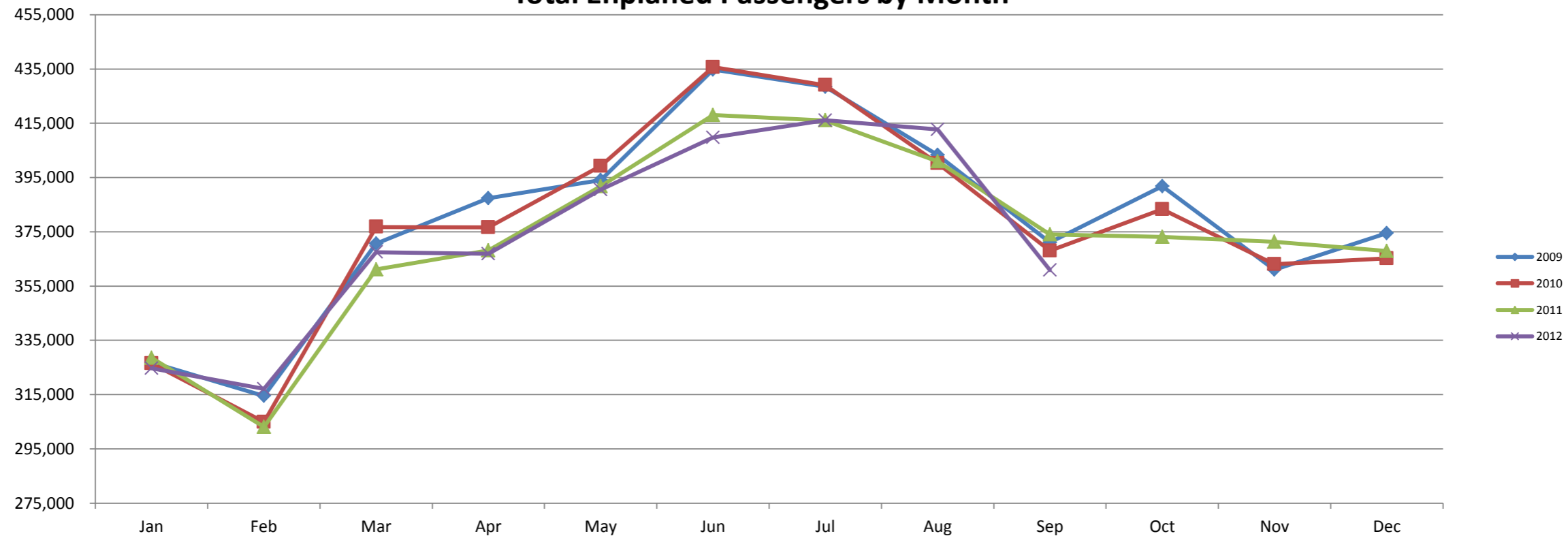
**Sacramento County Airport System**  
**Summary of Activity**  
**April 2012**

	CURRENT MONTH			FISCAL YEAR TO DATE			CALENDAR YEAR TO DATE		
	THIS YEAR	LAST YEAR	% +/- (-)	2011/12	2010/11	% +/- (-)	2012	2011	% +/- (-)
<b>Sacramento International Airport</b>									
<b>Passengers</b>									
Enplaned	366,848	368,169	(0.4%)	3,679,640	3,669,970	0.3%	1,376,181	1,361,037	1.1%
Deplaned	368,723	363,295	1.5%	3,668,290	3,665,661	0.1%	1,371,105	1,356,052	1.1%
	<b>735,571</b>	<b>731,464</b>	<b>0.6%</b>	<b>7,347,930</b>	<b>7,335,631</b>	<b>0.2%</b>	<b>2,747,286</b>	<b>2,717,089</b>	<b>1.1%</b>
<b>Landings</b>									
Landed Weight (1,000 pounds)	448,962	458,513	(2.1%)	4,631,997	4,656,727	(0.5%)	1,761,450	1,769,021	(0.4%)
# of Landings	4,053	4,103	(1.2%)	41,250	40,706	1.3%	15,872	15,688	1.2%
<b>Airmail (Pounds)</b>									
On	251,613	247,221	1.8%	1,873,746	1,098,490	70.6%	946,491	710,212	33.3%
Off	117,357	19,050	516.0%	599,208	169,891	252.7%	397,705	78,455	406.9%
	<b>368,970</b>	<b>266,271</b>	<b>38.6%</b>	<b>2,472,954</b>	<b>1,268,381</b>	<b>95.0%</b>	<b>1,344,196</b>	<b>788,667</b>	<b>70.4%</b>
<b>Freight (Pounds)</b>									
On	5,688,574	4,556,872	24.8%	56,238,050	55,052,576	2.2%	22,328,823	19,859,975	12.4%
Off	5,819,495	6,337,224	(8.2%)	63,303,434	65,965,894	(4.0%)	24,117,702	25,644,963	(6.0%)
	<b>11,508,069</b>	<b>10,894,096</b>	<b>5.6%</b>	<b>#####</b>	<b>121,018,470</b>	<b>(1.2%)</b>	<b>46,446,525</b>	<b>45,504,938</b>	<b>2.1%</b>
<b>Aircraft Operations</b>									
Air Carrier	6,500	6,666	(2.5%)	67,376	26,502	154.2%	25,553	26,502	(3.6%)
Air Taxi	1,755	1,680	4.5%	17,123	5,669	202.0%	6,949	5,669	22.6%
General Aviation	846	1,181	(28.4%)	9,023	2,881	213.2%	3,260	2,881	13.2%
Military	510	443	15.1%	4,962	913	443.5%	2,031	913	122.5%
	<b>9,611</b>	<b>9,970</b>	<b>(3.6%)</b>	<b>98,484</b>	<b>35,965</b>	<b>173.8%</b>	<b>37,793</b>	<b>35,965</b>	<b>5.1%</b>
<b>Mather Airport</b>									
<b>Passengers</b>									
Enplaned	4	15	(73.3%)	40	86	(53.5%)	8	29	(72.4%)
Deplaned	4	18	(77.8%)	47	79	(40.5%)	8	30	(73.3%)
	<b>8</b>	<b>33</b>	<b>(75.8%)</b>	<b>87</b>	<b>165</b>	<b>(47.3%)</b>	<b>16</b>	<b>59</b>	<b>(72.9%)</b>
<b>Landings</b>									
Landed Weight (1,000 pounds)	23,131	25,695	(10.0%)	261,817	257,208	1.8%	97,189	96,926	0.3%
# of Landings	225	241	(6.6%)	2,427	2,468	(1.7%)	929	928	0.1%
<b>Freight (Pounds)</b>									
On	3,466,594	2,908,861	19.2%	39,781,597	31,439,048	26.5%	14,466,326	11,509,424	25.7%
Off	4,113,640	3,829,864	7.4%	46,561,881	38,882,347	19.8%	16,754,191	14,234,214	17.7%
	<b>7,580,234</b>	<b>6,738,725</b>	<b>12.5%</b>	<b>86,343,478</b>	<b>70,321,395</b>	<b>22.8%</b>	<b>31,220,517</b>	<b>25,743,638</b>	<b>21.3%</b>
<b>Operations</b>									
Air Carrier	356	435	(18.2%)	3,839	1,467	161.7%	1,387	1,467	(5.5%)
Air Taxi	1,084	991	9.4%	10,185	4,124	147.0%	4,313	4,124	4.6%
General Aviation	3,362	3,301	1.8%	30,921	10,294	200.4%	11,894	10,294	15.5%
Military	2,736	1,612	69.7%	21,419	5,882	264.1%	9,893	5,882	68.2%
	<b>7,538</b>	<b>6,339</b>	<b>18.9%</b>	<b>66,364</b>	<b>21,767</b>	<b>204.9%</b>	<b>27,487</b>	<b>21,767</b>	<b>26.3%</b>
<b>Sacramento Executive Airport</b>									
<b>Landings</b>									
Landed Weight (1,000 pounds)	-	-	0.0%	-	-	0.0%	-	-	0.0%
# of Landings	-	-	0.0%	-	-	0.0%	-	-	0.0%
<b>Freight (Pounds)</b>									
On	-	-	0.0%	-	-	0.0%	-	-	0.0%
Off	-	-	0.0%	-	-	0.0%	-	-	0.0%
	<b>-</b>	<b>-</b>	<b>0.0%</b>	<b>-</b>	<b>-</b>	<b>0.0%</b>	<b>-</b>	<b>-</b>	<b>0.0%</b>
<b>Operations</b>									
Air Carrier	-	-	0.0%	3	1	200.0%	2	1	100.0%
Air Taxi	165	316	(47.8%)	2,805	1,322	112.2%	895	1,322	(32.3%)
General Aviation	7,435	7,340	1.3%	74,668	24,685	202.5%	27,162	24,685	10.0%
Military	13	5	160.0%	156	37	321.6%	51	37	37.8%
	<b>7,613</b>	<b>7,661</b>	<b>(0.6%)</b>	<b>77,632</b>	<b>26,045</b>	<b>198.1%</b>	<b>28,110</b>	<b>26,045</b>	<b>7.9%</b>

## Sacramento International Airport Passenger Statistics Prior 12 Months

		Current Year		Prior Year		Year over Year Change			
		Enplaned	Deplaned	Enplaned	Deplaned	Enplaned	% Difference	Deplaned	% Difference
May	2011	391,769	394,029	399,265	401,407	(7,496)	-1.9%	(7,378)	-1.8%
June	2011	418,002	407,756	435,659	424,982	(17,657)	-4.1%	(17,226)	-4.1%
July	2011	416,058	417,780	429,059	431,041	(13,001)	-3.0%	(13,261)	-3.1%
August	2011	400,919	407,414	400,252	406,618	667	0.2%	796	0.2%
September	2011	374,065	366,107	368,037	359,953	6,028	1.6%	6,154	1.7%
October	2011	373,117	372,704	383,303	384,583	(10,186)	-2.7%	(11,879)	-3.1%
November	2011	371,344	366,452	363,075	363,608	8,269	2.3%	2,844	0.8%
December	2011	367,956	366,728	365,207	363,806	2,749	0.8%	2,922	0.8%
January	2012	324,651	324,637	328,597	328,773	(3,946)	-1.2%	(4,136)	-1.3%
February	2012	317,163	316,011	303,123	304,141	14,040	4.6%	11,870	3.9%
March	2012	367,519	361,734	361,148	359,843	6,371	1.8%	1,891	0.5%
April	2012	366,848	368,723	368,169	363,295	(1,321)	-0.4%	5,428	1.5%
		<b>4,489,411</b>	<b>4,470,075</b>	<b>4,504,894</b>	<b>4,492,050</b>	<b>(15,483)</b>	<b>-0.3%</b>	<b>(21,975)</b>	<b>-0.5%</b>

### Total Enplaned Passengers by Month



**SACRAMENTO COUNTY AIRPORT SYSTEM  
SACRAMENTO INTERNATIONAL AIRPORT - SMF  
PASSENGERS BY YEAR**

<u>YEAR</u>	<u>JANUARY</u>	<u>FEBRUARY</u>	<u>MARCH</u>	<u>APRIL</u>	<u>MAY</u>	<u>JUNE</u>	<u>JULY</u>	<u>AUGUST</u>	<u>SEPTEMBER</u>	<u>OCTOBER</u>	<u>NOVEMBER</u>	<u>DECEMBER</u>	<u>Y.T.D. TOTAL</u>
1957													254,861
1958													269,869
1959													322,508
1960													339,657
1961													341,838
1962													360,312
1963	28,309	28,937	35,946	38,015	38,406	40,715	37,749	41,200	36,088	39,041	32,353	31,834	428,593
1964	34,273	33,167	39,247	38,142	40,017	43,231	45,350	46,888	44,246	45,699	40,294	44,029	494,583
1965	40,096	39,196	45,246	48,471	49,234	52,380	48,596	52,000	50,786	49,886	47,539	45,861	569,291
1966	48,107	44,658	53,254	55,461	57,102	64,383	37,576	41,831	56,325	56,195	53,905	58,702	627,499
1967	54,768	63,079	85,735	78,268	85,074	95,833	92,649	99,816	86,963	83,010 a	80,951	87,302	993,448
1968	74,371	73,458	87,996	93,969	95,121	108,249	102,837	112,578	90,356	87,990	86,060	96,417	1,109,402
1969	85,744	81,266	96,626	100,789	105,426	120,287	116,673	121,249	101,348	98,182	98,590	107,582	1,233,762
(MONTH-BY-MONTH STATISTICS NOT AVAILABLE FOR 1957-1962)													
1970	97,861	86,453	111,188 e	100,219	114,958	127,485	125,932	132,155	108,174	103,115	104,297	118,474	1,330,311
1971	105,233	91,046	108,185	121,103 e	122,696	134,605	136,095	141,783	120,582	118,511	121,480	130,592	1,451,911
1972	111,601	113,374	137,464	130,920 e	141,027	156,292	151,523	157,790	130,211	129,905	135,458	146,266	1,641,831
1973	128,908	122,840	137,856	153,946 e	155,747	174,733	166,941	186,285	147,331	144,316	137,961	137,590	1,794,454
1974	137,012	135,515	163,601	169,135 e	169,362	178,288	170,581	190,205	147,187	145,136	139,208	158,028	1,903,258
1975	131,809	124,378	160,026 e	150,439	172,408	188,220	183,023	205,273	155,782	161,579	158,674	140,850	1,932,461
1976	149,215	144,649	163,341	185,438 e	189,071	199,606	203,181	213,585	172,837	177,264	179,985	195,122	2,173,294
1977	175,394	161,269	191,417	206,456 e	209,349	222,284	231,234	248,808	208,010	205,682	218,884	218,964	2,497,751
1978	200,519	185,968	234,405 e	220,707	246,777	260,288	252,338	277,053	225,399	223,518 f	231,153	231,255	2,789,380
1979	215,586	206,309	247,897	226,636 e	242,426	290,846	279,997	298,691	232,131	226,751	222,764	211,475	2,901,509
1980	184,084	173,712	201,406	195,091 e	202,770	217,395	210,532	219,682	173,004 b	156,612	158,757	173,567	2,266,612
1981	167,960	157,614	186,891	196,957 e	204,486	215,382	213,426	197,598 c	173,789	181,975	181,701	194,083	2,271,862
1982	176,839	167,462	196,928	204,715 e	211,670	218,916	207,330	239,957	204,125	215,983	197,057	208,582	2,449,564
1983	187,094	175,729	228,402	212,534 e	227,530	247,061	231,562	243,807	205,752	203,660	210,164	214,081	2,587,376
1984	186,203	178,304	209,276	221,114 e	238,176	248,148	232,273	251,260	208,495	219,492	218,062	214,596	2,625,399
1985	190,275	185,634	243,501	254,115 e	262,548 d	258,075	271,943	281,784	226,494	237,032	237,873	242,731	2,892,005
1986	221,923	209,593	279,349 e	281,708	313,875	327,555	323,030	353,111	290,431	297,853	280,671	289,136	3,468,235
1987	252,821	256,700	324,537	356,933 e	365,074	359,297	366,548	368,324	289,336	301,499	292,062	293,452	3,826,583
1988	277,698	273,127	328,004	312,519 e	344,205	342,742	334,950	357,330	296,726	307,509	298,381	288,026	3,761,217
1989	246,184	233,693	293,190 e	279,644	317,237	364,748	341,186	370,192	313,755	343,091	331,453	299,221	3,733,594
1990	269,813	253,717	300,303	302,605 e	320,916	339,720	333,760	360,379	293,552	303,894	284,319	268,813	3,631,791
1991	235,425	201,762	249,147 e	288,130	364,876	427,700	475,285	506,743	400,304	414,384	381,779	406,429	4,351,964
1992	340,549	332,144	395,467	410,891 e	438,029	504,731	526,479	542,818	420,447	409,741	397,255	406,443	5,124,994
1993	344,854	345,530	416,564	444,802 e	471,324	496,646	485,994	516,603	451,118	468,520	449,613	431,064	5,322,632
1994	376,225	372,571	454,618	457,593 e	494,492	526,957	556,857	581,167	500,514	539,171	531,983	535,748	5,927,896
1995	459,884	439,425	526,954	563,837 e	582,292	635,978	619,014	648,559	544,556	564,895	560,112	558,964	6,704,470
1996	481,074	484,829	574,196	575,425 e	609,441	644,117	628,325	665,609	571,727	641,594	519,846	589,601	6,985,784
1997	507,032	478,515	577,422 e	553,761	609,488	660,404	647,377	662,265	548,593	586,767	559,835	575,821	6,967,280
1998	483,621	482,705	582,794	621,494	643,967	672,293	671,943	670,663	566,273	605,832	599,203	600,590	7,201,378
1999	512,904	509,033	619,829	639,696	669,360	706,214	692,616	701,424	622,843	641,594	631,040	608,339	7,554,892



**SACRAMENTO COUNTY AIRPORT SYSTEM  
SACRAMENTO INTERNATIONAL AIRPORT - SMF  
PASSENGERS BY YEAR**

<u>YEAR</u>	<u>JANUARY</u>	<u>FEBRUARY</u>	<u>MARCH</u>	<u>APRIL</u>	<u>MAY</u>	<u>JUNE</u>	<u>JULY</u>	<u>AUGUST</u>	<u>SEPTEMBER</u>	<u>OCTOBER</u>	<u>NOVEMBER</u>	<u>DECEMBER</u>	<u>Y.T.D. TOTAL</u>
<u>FOOTNOTES OF FACTORS AFFECTING TOTALS</u>				<u>SERVICE CHANGES, AIRLINE MERGERS AND ACQUISITIONS (SINCE APRIL 1985)</u>									
a)	Sacramento Metropolitan Airport opened 10/28/67.			America West began service 4/1/85.			Trans States ceased service 12/28/99						
b)	PSA strike, 9/25/80-11/16/80.			Horizon ceased service 1/31/88.			Continental began service 5/2/00.						
c)	Air Traffic Controllers strike began 8/3/81.			Continental began service 8/1/86.			Mather Airport Air Traffic Control Tower began 8/1/00.						
d)	United Airlines strike (pilots) 5/17/85-6/18/85.			Frontier ceased service 8/24/86.			Kitty Hawk & Polar Air ceased MHR service 8/31/01.						
e)	Easter			Republic merged into Northwest 10/1/86.			Air Wisconsin began service October, 2001.						
f)	Start of airline deregulation, 10/78.			Continental merged with Frontier 10/17/86.			Frontier Airlines began service March 1, 2002						
g)	Nationwide economic recession approximately 1980-1982.			Western merged into Delta 4/1/87.			Hawaiian Airlines began service June 7, 2002						
h)	Nationwide economic recession and Persian Gulf War, 1990-91.			AirCal merged into American 7/1/87.			Air Wisconsin ceased service June, 2002.						
i)	World Trade Center Disaster September 11, 2001.			PSA merged with USAir 4/8/88.			Mexicana Airlines began service July 1, 2002						
j)	Nationwide economic recession approximately 2008-2010			Qwest Began service 3/21/88.			Aloha Airlines began service April 18, 2003						
k)	Mexicana Airlines stops all flights			Qwest ceased service 8/2/88.			Mesa Airlines began service October, 2003						
L)	New Central Terminal B opens			Stateswest began service 8/15/90.			JetBlue Airways began service February, 2004						
				Southwest began service 6/17/91.			ASA/Delta Connection began service January, 2005						
				Morris Air (Charter) " 12/17/92.			Martinaire Partners, L.P. began Service November, 2005						
				Alaska Air began service 7/12/93.			Union Flights Ceased Service October 2005						
				AmerEagle ceased service 9/11/93.			Aloha Airlines moved from T-B2 to T-B1 effective						
				Continental ceased service 12/16/93.			April 14,2006.						
				USAir ceased service 1/5/94.			Jetblue moved from T-A to T-B2 effective April 28, 2006						
				Trans States began service 1/5/94.			Pacific Coast Jet Charter began service July, 2006						
				Horizon began service 4/3/94.			Continental Airlines moved from T-A to T B-2 effective						
				TWA began service 6/16/94.			October 1, 2006						
				Morris merged with Southwest 9/94.			US Airways merged with America West						
				Shuttle By United began service 10/1/94.			Frontier Airlines began International service March 3, 2007						
				Reno Air Express began service 2/15/95.			Express Jet began service April 2007						
				Reno Air Express ceased service 3/6/95.			Air Canada JAZZ began service June 15, 2007						
				Rich Int'l began service 6/10/95.			Frontier						
				Sierra Expressway began svc 8/19/95.			Airlines						
				Rich Int'l ceased service 8/27/95.			Aloha airlines filed Bankruptcy in Mar 31, 2008 NO REPORT						
				Sierra Expressway ceased service 2/16/96.			Express Jet ceased operation						
				Rich Int'l began service 6/14/96.			MESA ceased operation in March 2008						
				Rich Int'l ceased service 8/30/96.			Air -Canada pulled out of SMF October 30, 2008						
				Delta Connection/Skywest ceased service 10/1/97			Delta/Northwest merger between these airlines Marach 2009						
				Terminal A opened 10/26/98			Mesaba/Delta Connection started on September 2011 (Commuter)						
				Winair began operations 11/2/98									
				Winair ceased service 7/7/99									
				Pacific Skyway began operations 10/1/99									