

Sacramento International Airport Airline Passenger Statistics June 2012

	CURRENT MONTH			FISCAL YEAR TO DATE			CALENDAR YEAR TO DATE		
	THIS YEAR	LAST YEAR	% + / (-)	2011/12	2010/11	% + / (-)	2012	2011	% + / (-)
Enplaned									
Domestic									
Alaska Airlines	24,020	23,498	2.2%	237,302	231,230	2.6%	115,452	111,991	3.1%
American Airlines	20,805	21,305	(2.3%)	238,469	201,497	18.3%	114,974	104,190	10.4%
Continental Airlines	-	14,334	(100.0%)	122,147	164,364	(25.7%)	45,744	78,392	(41.6%)
Delta Airlines	29,676	30,340	(2.2%)	288,160	298,158	(3.4%)	122,621	131,126	(6.5%)
Express Jet/Delta Connection	-	-		1,472	-		-	-	
Frontier Airlines	12,403	15,769	(21.3%)	124,788	134,887	(7.5%)	50,263	61,032	(17.6%)
Hawaiian Airlines	7,405	7,451	(0.6%)	87,059	86,557	0.6%	43,291	42,854	1.0%
Horizon Air	9,974	10,720	(7.0%)	122,866	130,007	(5.5%)	61,005	58,030	5.1%
Jet Blue	16,532	11,044	49.7%	156,845	112,389	39.6%	81,837	55,404	47.7%
Mesa/US Airways Express/YV	-	-		-	5,125	(100.0%)	-	3,472	(100.0%)
Skywest/Delta Connection	10,701	11,050	(3.2%)	121,063	78,405	54.4%	62,990	46,758	34.7%
Skywest/United Express	13,344	13,921	(4.1%)	153,907	177,428	(13.3%)	73,514	84,245	(12.7%)
Southwest	198,756	201,218	(1.2%)	2,243,558	2,319,462	(3.3%)	1,115,554	1,136,037	(1.8%)
United Airlines	35,711	29,482	21.1%	303,714	292,866	3.7%	153,208	142,974	7.2%
US Airways	25,570	25,992	(1.6%)	231,412	230,241	0.5%	113,876	103,748	9.8%
CHARTER	-	-		-	-		-	-	
	404,897	416,124	(2.7%)	4,432,762	4,462,616	(0.7%)	2,154,329	2,160,253	(0.3%)
International									
AeroMexico	3,091	-		27,970	-		11,730	-	
Alaska Airlines	1,788	1,878	(4.8%)	18,572	11,530	61.1%	9,786	10,555	(7.3%)
Frontier Airlines	-	-		699	-		699	-	
Mexicana	-	-		-	5,595	(100.0%)	-	-	
	4,879	1,878	159.8%	47,241	17,125	175.9%	22,215	10,555	110.5%
Total Enplaned	409,776	418,002	(1.968%)	4,480,003	4,479,741	0.0%	2,176,544	2,170,808	0.3%
Deplaned									
Domestic									
Alaska Airlines	23,057	22,011	4.8%	237,576	230,932	2.9%	112,983	109,964	2.7%
American Airlines	20,674	21,013	(1.6%)	239,756	204,640	17.2%	115,813	105,775	9.5%
Continental Airlines	-	13,955	(100.0%)	117,657	160,991	(26.9%)	43,925	77,007	(43.0%)
Delta Airlines	28,360	29,162	(2.8%)	271,781	286,567	(5.2%)	113,732	125,999	(9.7%)
Express Jet/Delta Connection	-	-		1,370	-		-	-	
Frontier Airlines	11,920	15,559	(23.4%)	122,667	130,645	(6.1%)	48,086	59,676	(19.4%)
Hawaiian Airlines	7,215	7,118	1.4%	86,635	86,438	0.2%	43,410	42,988	1.0%
Horizon Air	9,574	10,641	(10.0%)	125,613	132,952	(5.5%)	61,565	58,010	6.1%
Jet Blue	15,996	10,695	49.6%	154,568	112,784	37.0%	80,808	54,850	47.3%
Mesa/US Airways Express/YV	-	-		-	3,853	(100.0%)	-	2,696	(100.0%)
Skywest/Delta Connection	10,224	10,580	(3.4%)	122,292	77,744	57.3%	65,119	46,434	40.2%
Skywest/United Express	12,508	13,760	(9.1%)	151,012	177,474	(14.9%)	70,746	82,870	(14.6%)
Southwest	196,791	199,556	(1.4%)	2,248,494	2,326,866	(3.4%)	1,115,131	1,138,993	(2.1%)
United Airlines	36,266	27,466	32.0%	304,829	289,685	5.2%	154,407	138,865	11.2%
US Airways	24,320	24,526	(0.8%)	229,077	230,183	(0.5%)	112,578	103,119	9.2%
	396,905	406,042	(2.3%)	4,413,327	4,451,754	(0.9%)	2,138,303	2,147,246	(0.4%)
International									
AeroMexico	2,059	-		26,898	-		12,725	-	
Alaska Airlines	1,659	1,714	(3.2%)	18,000	11,637	54.7%	10,012	10,591	(5.5%)
Frontier Airlines	-	-		595	-		595	-	
Mexicana	-	-		-	4,055	(100.0%)	-	-	
	3,718	1,714	116.9%	45,493	15,692	189.9%	23,332	10,591	120.3%
Total Deplaned	400,623	407,756	(1.7%)	4,458,820	4,467,446	(0.2%)	2,161,635	2,157,837	0.2%
ENPLANED AND DEPLANED PASSENGERS	810,399	825,758	(1.9%)	8,938,823	8,947,187	(0.1%)	4,338,179	4,328,645	0.2%

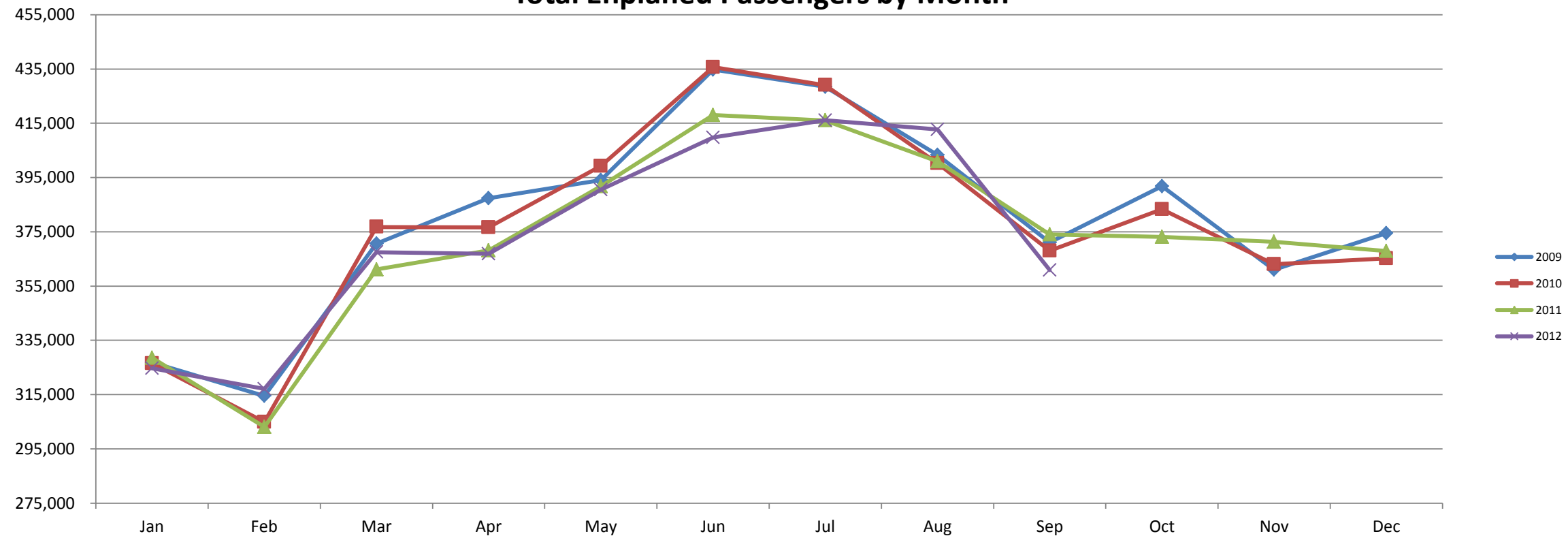
Sacramento County Airport System
Summary of Activity
June 2012

	CURRENT MONTH			FISCAL YEAR TO DATE			CALENDAR YEAR TO DATE		
	THIS YEAR	LAST YEAR	% +/- (-)	2011/12	2010/11	% +/- (-)	2012	2011	% +/- (-)
Sacramento International Airport									
Passengers									
Enplaned	409,776	418,002	(2.0%)	4,480,003	4,479,741	0.0%	2,176,544	2,170,808	0.3%
Deplaned	400,623	407,756	(1.7%)	4,458,820	4,467,446	(0.2%)	2,161,635	2,157,837	0.2%
	810,399	825,758	(1.9%)	8,938,823	8,947,187	(0.1%)	4,338,179	4,328,645	0.2%
Landings									
Landed Weight (1,000 pounds)	453,152	494,229	(8.3%)	5,561,873	5,636,983	(1.3%)	2,691,325	2,749,277	(2.1%)
# of Landings	3,817	4,353	(12.3%)	49,312	49,379	(0.1%)	23,934	24,361	(1.8%)
Airmail (Pounds)									
On	267,559	177,408	50.8%	2,408,845	1,466,193	64.3%	1,481,590	1,077,915	37.4%
Off	216,948	4,050	5256.7%	1,051,658	177,481	492.5%	850,155	86,045	888.0%
	484,507	181,458	167.0%	3,460,503	1,643,674	110.5%	2,331,745	1,163,960	100.3%
Freight (Pounds)									
On	5,695,132	5,574,504	2.2%	68,064,134	65,850,612	3.4%	34,154,907	30,658,011	11.4%
Off	6,230,787	6,496,838	(4.1%)	75,614,167	78,323,454	(3.5%)	36,428,435	38,002,523	(4.1%)
	11,925,919	12,071,342	(1.2%)	#####	144,174,066	(0.3%)	70,583,342	68,660,534	2.8%
Aircraft Operations									
Air Carrier	6,917	7,218	(4.2%)	81,194	40,750	99.2%	39,371	40,750	(3.4%)
Air Taxi	1,684	1,630	3.3%	20,520	9,053	126.7%	10,346	9,053	14.3%
General Aviation	946	1,002	(5.6%)	11,023	5,286	108.5%	5,260	5,286	(0.5%)
Military	612	364	68.1%	6,317	1,722	266.8%	3,386	1,722	96.6%
	10,159	10,214	(0.5%)	119,054	56,811	109.6%	58,363	56,811	2.7%
Mather Airport									
Passengers									
Enplaned	12	2	500.0%	63	104	(39.4%)	31	47	(34.0%)
Deplaned	12	8	50.0%	68	107	(36.4%)	29	58	(50.0%)
	24	10	140.0%	131	211	(37.9%)	60	105	(42.9%)
Landings									
Landed Weight (1,000 pounds)	28,658	25,955	10.4%	319,388	307,448	3.9%	154,761	147,166	5.2%
# of Landings	237	240	(1.3%)	2,914	2,946	(1.1%)	1,416	1,406	0.7%
Freight (Pounds)									
On	3,924,127	3,370,474	16.4%	47,715,594	37,834,087	26.1%	22,400,323	17,904,463	25.1%
Off	4,765,879	4,008,624	18.9%	56,338,843	46,538,314	21.1%	26,531,153	21,890,181	21.2%
	8,690,006	7,379,098	17.8%	#####	84,372,401	23.3%	48,931,476	39,794,644	23.0%
Operations									
Air Carrier	380	372	2.2%	4,601	2,218	107.4%	2,149	2,218	(3.1%)
Air Taxi	1,000	978	2.2%	12,218	6,143	98.9%	6,346	6,143	3.3%
General Aviation	3,337	3,024	10.4%	37,549	16,574	126.6%	18,522	16,574	11.8%
Military	1,953	1,879	3.9%	25,514	9,211	177.0%	13,988	9,211	51.9%
	6,670	6,253	6.7%	79,882	34,146	133.9%	41,005	34,146	20.1%
Sacramento Executive Airport									
Landings									
Landed Weight (1,000 pounds)	-	-	0.0%	-	-	0.0%	-	-	0.0%
# of Landings	-	-	0.0%	-	-	0.0%	-	-	0.0%
Freight (Pounds)									
On	-	-	0.0%	-	-	0.0%	-	-	0.0%
Off	-	-	0.0%	-	-	0.0%	-	-	0.0%
	-	-	0.0%	-	-	0.0%	-	-	0.0%
Operations									
Air Carrier	1	-	0.0%	5	1	400.0%	4	1	300.0%
Air Taxi	179	322	(44.4%)	3,182	1,981	60.6%	1,272	1,981	(35.8%)
General Aviation	6,876	7,384	(6.9%)	88,466	40,288	119.6%	40,960	40,288	1.7%
Military	7	17	(58.8%)	174	74	135.1%	69	74	(6.8%)
	7,063	7,723	(8.5%)	91,827	42,344	116.9%	42,305	42,344	(0.1%)

Sacramento International Airport Passenger Statistics Prior 12 Months

		Current Year		Prior Year		Year over Year Change			
		Enplaned	Deplaned	Enplaned	Deplaned	Enplaned	% Difference	Deplaned	% Difference
July	2011	416,058	417,780	429,059	431,041	(13,001)	-3.0%	(13,261)	-3.1%
August	2011	400,919	407,414	400,252	406,618	667	0.2%	796	0.2%
September	2011	374,065	366,107	368,037	359,953	6,028	1.6%	6,154	1.7%
October	2011	373,117	372,704	383,303	384,583	(10,186)	-2.7%	(11,879)	-3.1%
November	2011	371,344	366,452	363,075	363,608	8,269	2.3%	2,844	0.8%
December	2011	367,956	366,728	365,207	363,806	2,749	0.8%	2,922	0.8%
January	2012	324,651	324,637	328,597	328,773	(3,946)	-1.2%	(4,136)	-1.3%
February	2012	317,163	316,011	303,123	304,141	14,040	4.6%	11,870	3.9%
March	2012	367,519	361,734	361,148	359,843	6,371	1.8%	1,891	0.5%
April	2012	366,848	368,723	368,169	363,295	(1,321)	-0.4%	5,428	1.5%
May	2012	390,587	389,907	391,769	394,029	(1,182)	-0.3%	(4,122)	-1.0%
June	2012	409,776	400,623	418,002	407,756	(8,226)	-2.0%	(7,133)	-1.7%
		4,480,003	4,458,820	4,479,741	4,467,446	262	0.0%	(8,626)	-0.2%

Total Enplaned Passengers by Month



**SACRAMENTO COUNTY AIRPORT SYSTEM
SACRAMENTO INTERNATIONAL AIRPORT - SMF
PASSENGERS BY YEAR**

<u>YEAR</u>	<u>JANUARY</u>	<u>FEBRUARY</u>	<u>MARCH</u>	<u>APRIL</u>	<u>MAY</u>	<u>JUNE</u>	<u>JULY</u>	<u>AUGUST</u>	<u>SEPTEMBER</u>	<u>OCTOBER</u>	<u>NOVEMBER</u>	<u>DECEMBER</u>	<u>Y.T.D. TOTAL</u>
1957													254,861
1958													269,869
1959													322,508
1960													339,657
1961													341,838
1962													360,312
1963	28,309	28,937	35,946	38,015	38,406	40,715	37,749	41,200	36,088	39,041	32,353	31,834	428,593
1964	34,273	33,167	39,247	38,142	40,017	43,231	45,350	46,888	44,246	45,699	40,294	44,029	494,583
1965	40,096	39,196	45,246	48,471	49,234	52,380	48,596	52,000	50,786	49,886	47,539	45,861	569,291
1966	48,107	44,658	53,254	55,461	57,102	64,383	37,576	41,831	56,325	56,195	53,905	58,702	627,499
1967	54,768	63,079	85,735	78,268	85,074	95,833	92,649	99,816	86,963	83,010 a	80,951	87,302	993,448
1968	74,371	73,458	87,996	93,969	95,121	108,249	102,837	112,578	90,356	87,990	86,060	96,417	1,109,402
1969	85,744	81,266	96,626	100,789	105,426	120,287	116,673	121,249	101,348	98,182	98,590	107,582	1,233,762
1970	97,861	86,453	111,188 e	100,219	114,958	127,485	125,932	132,155	108,174	103,115	104,297	118,474	1,330,311
1971	105,233	91,046	108,185	121,103 e	122,696	134,605	136,095	141,783	120,582	118,511	121,480	130,592	1,451,911
1972	111,601	113,374	137,464	130,920 e	141,027	156,292	151,523	157,790	130,211	129,905	135,458	146,266	1,641,831
1973	128,908	122,840	137,856	153,946 e	155,747	174,733	166,941	186,285	147,331	144,316	137,961	137,590	1,794,454
1974	137,012	135,515	163,601	169,135 e	169,362	178,288	170,581	190,205	147,187	145,136	139,208	158,028	1,903,258
1975	131,809	124,378	160,026 e	150,439	172,408	188,220	183,023	205,273	155,782	161,579	158,674	140,850	1,932,461
1976	149,215	144,649	163,341	185,438 e	189,071	199,606	203,181	213,585	172,837	177,264	179,985	195,122	2,173,294
1977	175,394	161,269	191,417	206,456 e	209,349	222,284	231,234	248,808	208,010	205,682	218,884	218,964	2,497,751
1978	200,519	185,968	234,405 e	220,707	246,777	260,288	252,338	277,053	225,399	223,518 f	231,153	231,255	2,789,380
1979	215,586	206,309	247,897	226,636 e	242,426	290,846	279,997	298,691	232,131	226,751	222,764	211,475	2,901,509
1980	184,084	173,712	201,406	195,091 e	202,770	217,395	210,532	219,682	173,004 b	156,612	158,757	173,567	2,266,612
1981	167,960	157,614	186,891	196,957 e	204,486	215,382	213,426	197,598 c	173,789	181,975	181,701	194,083	2,271,862
1982	176,839	167,462	196,928	204,715 e	211,670	218,916	207,330	239,957	204,125	215,983	197,057	208,582	2,449,564
1983	187,094	175,729	228,402	212,534 e	227,530	247,061	231,562	243,807	205,752	203,660	210,164	214,081	2,587,376
1984	186,203	178,304	209,276	221,114 e	238,176	248,148	232,273	251,260	208,495	219,492	218,062	214,596	2,625,399
1985	190,275	185,634	243,501	254,115 e	262,548 d	258,075	271,943	281,784	226,494	237,032	237,873	242,731	2,892,005
1986	221,923	209,593	279,349 e	281,708	313,875	327,555	323,030	353,111	290,431	297,853	280,671	289,136	3,468,235
1987	252,821	256,700	324,537	356,933 e	365,074	359,297	366,548	368,324	289,336	301,499	292,062	293,452	3,826,583
1988	277,698	273,127	328,004	312,519 e	344,205	342,742	334,950	357,330	296,726	307,509	298,381	288,026	3,761,217
1989	246,184	233,693	293,190 e	279,644	317,237	364,748	341,186	370,192	313,755	343,091	331,453	299,221	3,733,594
1990	269,813	253,717	300,303	302,605 e	320,916	339,720	333,760	360,379	293,552	303,894	284,319	268,813	3,631,791
1991	235,425	201,762	249,147 e	288,130	364,876	427,700	475,285	506,743	400,304	414,384	381,779	406,429	4,351,964
1992	340,549	332,144	395,467	410,891 e	438,029	504,731	526,479	542,818	420,447	409,741	397,255	406,443	5,124,994
1993	344,854	345,530	416,564	444,802 e	471,324	496,646	485,994	516,603	451,118	468,520	449,613	431,064	5,322,632
1994	376,225	372,571	454,618	457,593 e	494,492	526,957	556,857	581,167	500,514	539,171	531,983	535,748	5,927,896
1995	459,884	439,425	526,954	563,837 e	582,292	635,978	619,014	648,559	544,556	564,895	560,112	558,964	6,704,470
1996	481,074	484,829	574,196	575,425 e	609,441	644,117	628,325	665,609	571,727	641,594	519,846	589,601	6,985,784
1997	507,032	478,515	577,422 e	553,761	609,488	660,404	647,377	662,265	548,593	586,767	559,835	575,821	6,967,280
1998	483,621	482,705	582,794	621,494	643,967	672,293	671,943	670,663	566,273	605,832	599,203	600,590	7,201,378
1999	512,904	509,033	619,829	639,696	669,360	706,214	692,616	701,424	622,843	641,594	631,040	608,339	7,554,892

(MONTH-BY-MONTH STATISTICS NOT AVAILABLE FOR 1957-1962)

**SACRAMENTO COUNTY AIRPORT SYSTEM
SACRAMENTO INTERNATIONAL AIRPORT - SMF
PASSENGERS BY YEAR**

<u>YEAR</u>	<u>JANUARY</u>	<u>FEBRUARY</u>	<u>MARCH</u>	<u>APRIL</u>	<u>MAY</u>	<u>JUNE</u>	<u>JULY</u>	<u>AUGUST</u>	<u>SEPTEMBER</u>	<u>OCTOBER</u>	<u>NOVEMBER</u>	<u>DECEMBER</u>	<u>Y.T.D. TOTAL</u>
<u>FOOTNOTES OF FACTORS AFFECTING TOTALS</u>				<u>SERVICE CHANGES, AIRLINE MERGERS AND ACQUISITIONS (SINCE APRIL 1985)</u>									
a)	Sacramento Metropolitan Airport opened 10/28/67.			America West began service 4/1/85.			Trans States ceased service 12/28/99						
b)	PSA strike, 9/25/80-11/16/80.			Horizon ceased service 1/31/88.			Continental began service 5/2/00.						
c)	Air Traffic Controllers strike began 8/3/81.			Continental began service 8/1/86.			Mather Airport Air Traffic Control Tower began 8/1/00.						
d)	United Airlines strike (pilots) 5/17/85-6/18/85.			Frontier ceased service 8/24/86.			Kitty Hawk & Polar Air ceased MHR service 8/31/01.						
e)	Easter			Republic merged into Northwest 10/1/86.			Air Wisconsin began service October, 2001.						
f)	Start of airline deregulation, 10/78.			Continental merged with Frontier 10/17/86.			Frontier Airlines began service March 1, 2002						
g)	Nationwide economic recession approximately 1980-1982.			Western merged into Delta 4/1/87.			Hawaiian Airlines began service June 7, 2002						
h)	Nationwide economic recession and Persian Gulf War, 1990-91.			AirCal merged into American 7/1/87.			Air Wisconsin ceased service June, 2002.						
i)	World Trade Center Disaster September 11, 2001.			PSA merged with USAir 4/8/88.			Mexicana Airlines began service July 1, 2002						
j)	Nationwide economic recession approximately 2008-2010			Qwest Began service 3/21/88.			Aloha Airlines began service April 18, 2003						
k)	Mexicana Airlines stops all flights			Qwest ceased service 8/2/88.			Mesa Airlines began service October, 2003						
L)	New Central Terminal B opens			Stateswest began service 8/15/90.			JetBlue Airways began service February, 2004						
				Southwest began service 6/17/91.			ASA/Delta Connection began service January, 2005						
				Morris Air (Charter) " 12/17/92.			Martinaire Partners, L.P. began Service November, 2005						
				Alaska Air began service 7/12/93.			Union Flights Ceased Service October 2005						
				AmerEagle ceased service 9/11/93.			Aloha Airlines moved from T-B2 to T-B1 effective						
				Continental ceased service 12/16/93.			April 14,2006.						
				USAir ceased service 1/5/94.			Jetblue moved from T-A to T-B2 effective April 28, 2006						
				Trans States began service 1/5/94.			Pacific Coast Jet Charter began service July, 2006						
				Horizon began service 4/3/94.			Continental Airlines moved from T-A to T B-2 effective						
				TWA began service 6/16/94.			October 1, 2006						
				Morris merged with Southwest 9/94.			US Airways merged with America West						
				Shuttle By United began service 10/1/94.			Frontier Airlines began International service March 3, 2007						
				Reno Air Express began service 2/15/95.			Express Jet began service April 2007						
				Reno Air Express ceased service 3/6/95.			Air Canada JAZZ began service June 15, 2007						
				Rich Int'l began service 6/10/95.			Frontier						
				Sierra Expressway began svc 8/19/95.			Airlines						
				Rich Int'l ceased service 8/27/95.			Aloha airlines filed Bankruptcy in Mar 31, 2008 NO REPORT						
				Sierra Expressway ceased service 2/16/96.			Express Jet ceased operation						
				Rich Int'l began service 6/14/96.			MESA ceased operation in March 2008						
				Rich Int'l ceased service 8/30/96.			Air -Canada pulled out of SMF October 30, 2008						
				Delta Connection/Skywest ceased service 10/1/97			Delta/Northwest merger between these airlines Marach 2009						
				Terminal A opened 10/26/98			Mesaba/Delta Connection started on September 2011 (Commuter)						
				Winair began operations 11/2/98									
				Winair ceased service 7/7/99									
				Pacific Skyway began operations 10/1/99									