

Sacramento International Airport

Construction Management & Inspection Services

Request for Qualifications & Experience Mandatory Pre Submittal Conference

January 30, 2024

SMForward Program - CMIS RFQ&E

Agenda

Introductions

RFQ&E Requirements

Services to be Provided

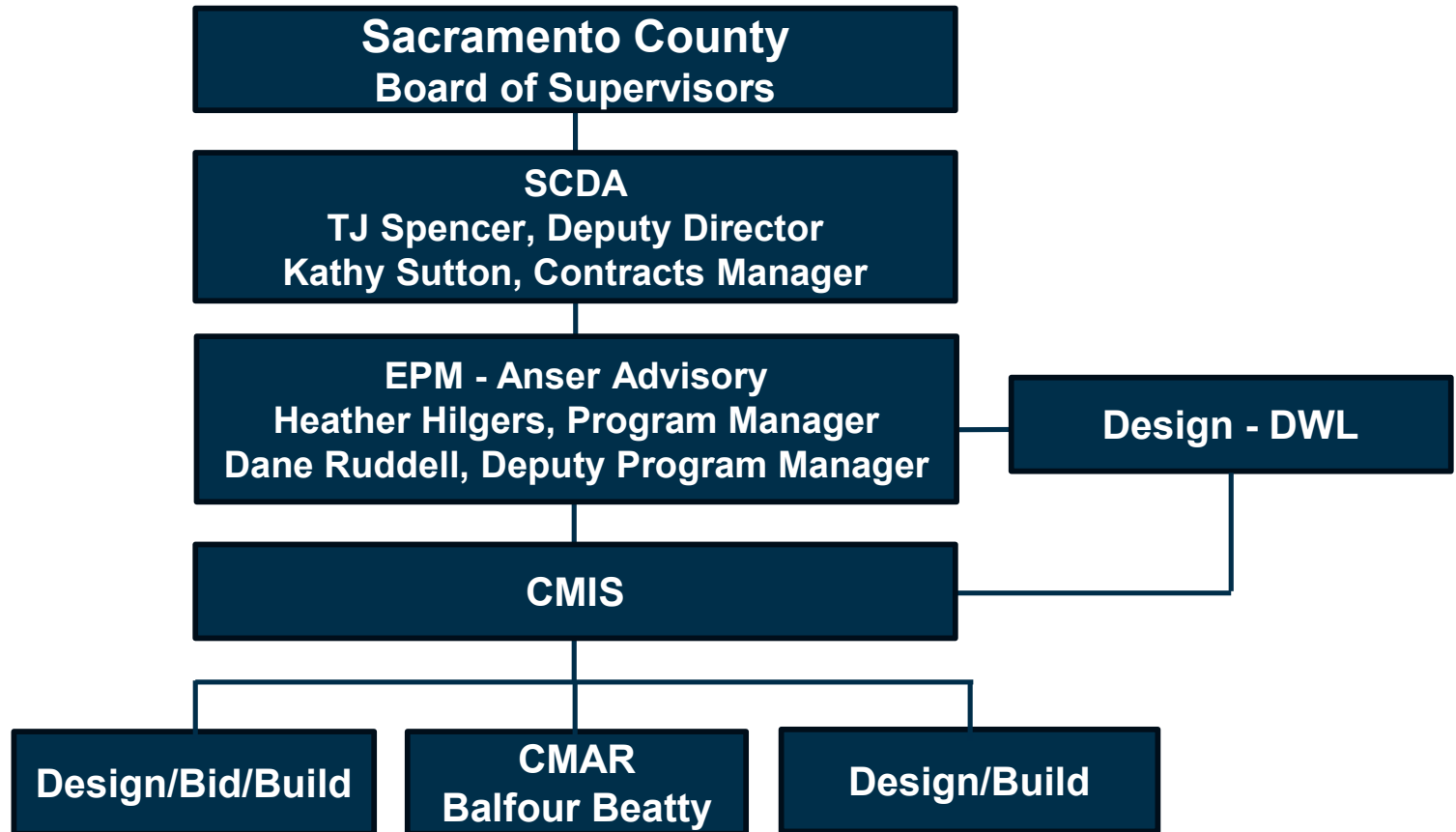
Overview of Projects

Questions

Meeting Sign-In

SMForward Program - CMIS RFQ&E

Introductions



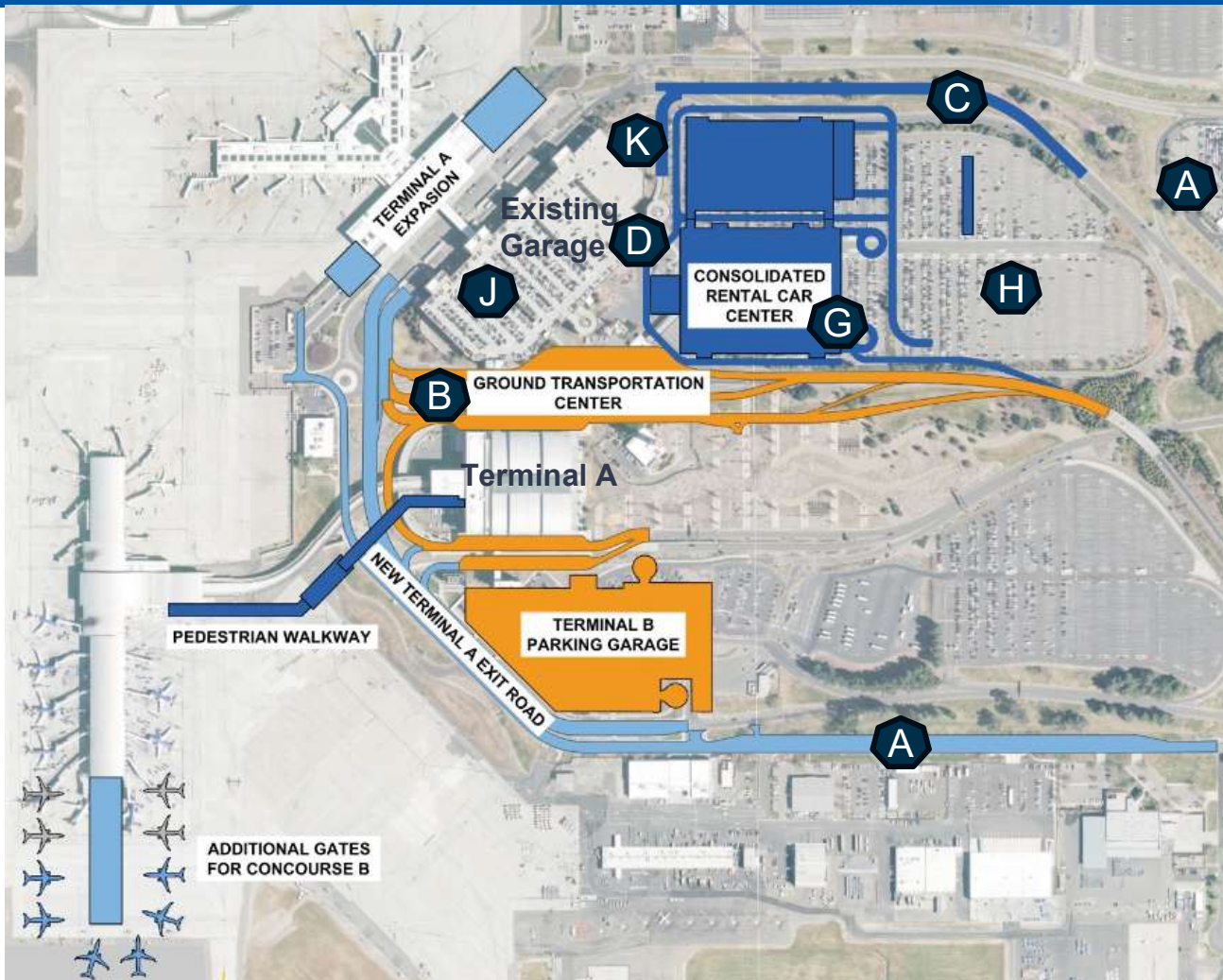
SMForward Program

Requested Services

- Construction Management
- Inspection
- Special Inspection
- Quality Assurance
- Commissioning
- Plan/Permit Review

Construction Management Firms are expected to be the Prime Consultant

SMForward Landside Projects



- A Roadway Project
- B Ground Transportation Center
- C Roadway Project
- D Roadway Project
- G Consolidated Rental Car Facility (ConRAC)
- H Existing Parking
- J Path of Travel Between Terminal A and B through existing parking structure.
- K Roadway Project

SMForward Projects Requiring CMIS Supports

- **Terminal B-Concourse B Pedestrian Walkway**
- ❑ Project Budget: \$140 Million
 - ❑ Contracting Method: Construction Manager at Risk (CMAR)
 - ❑ Contractor: Balfour Beatty
 - ❑ Design Consultant: DWL Architects
 - ❑ Conceptual Design: Complete
 - ❑ Schematic Design: Underway
 - ❑ Contractor: Balfour Beatty; Construction Manager At Risk (CMAR); Under contract; Preconstruction Services Phase
 - ❑ Projected Start of Construction: July 2024
 - ❑ Estimated Completion: December 2025

- **Terminal B Parking Garage – 4500 to 5500 spaces**
- ❑ Project Budget: \$390 Million
 - ❑ Contracting Method: Design-Build (DB)
 - ❑ Design-Build Entity (DBE): Shortlisted 3 DBEs; in progress of three confidential design competition meetings; selection of DBE will be based on best value method
 - ❑ Projected Start of Construction: October 2024
 - ❑ Estimated Completion : October 2026

SMForward Projects Requiring CMIS Supports

→ Concourse B Expansion (6-8 Gates)

- ❑ Project Budget: \$250 Million
- ❑ Contracting Method: Construction Manager at Risk (CMAR)
- ❑ Contractor: TBD
- ❑ Design Consultant: DWL Architects
- ❑ Design: Concept analysis for Concourse B expansion to begin in January 2024
- ❑ Procurement for CMAR: Projected to begin in March or April of 2024
- ❑ Projected Start of Construction: Projected to be August 2025 for Concourse B
- ❑ Estimated Completion: Projected to be January 2028 for Concourse B

→ New Consolidated Car Rental Facility (ConRAC)

- ❑ Project Budget: \$390 Million
- ❑ Business Model: TBD
- ❑ Contracting Method: TBD
- ❑ Earliest construction start date is Summer 2025

SMForward Projects NOT IN CMIS Scope

→ Terminal A Expansion

- ❑ Project Budget: \$50 Million
- ❑ Contracting Method: Construction Manager at Risk (CMAR)
- ❑ Contractor: TBD
- ❑ Design Consultant: DWL Architects
- ❑ Design: Initiate systems assessment in January 2024
- ❑ Procurement for CMAR: Timing is being evaluated
- ❑ Projected Start of Construction: TBD
- ❑ Estimated Completion: TBD

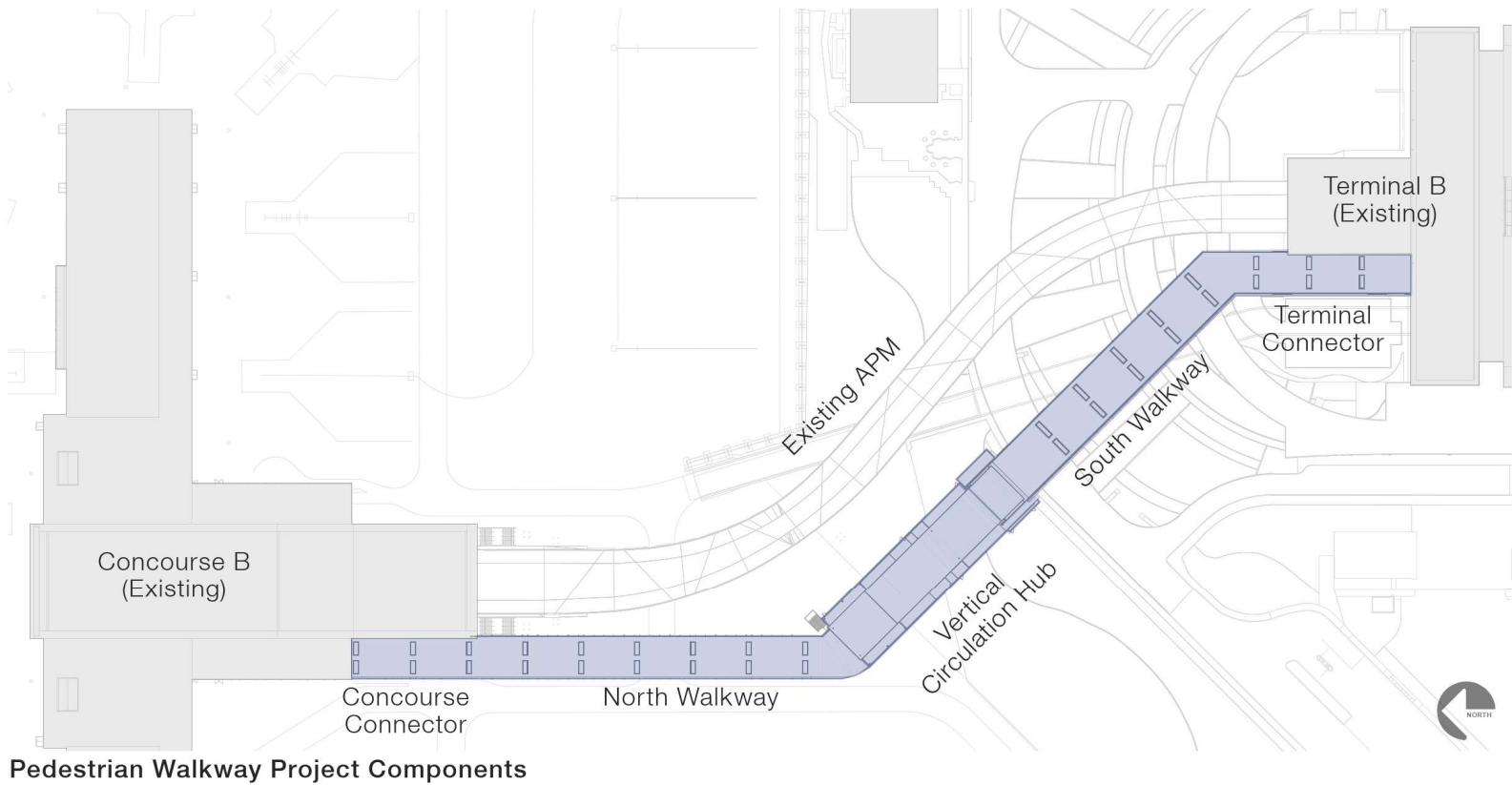
→ New Terminal A Exit Roadway

- ❑ Project Budget: \$15 Million
- ❑ Contracting Method: Design-Bid-Build
- ❑ Contractor: TBD
- ❑ Design Consultant: ARUP
- ❑ Design: Conceptual design complete
- ❑ Projected Start of Construction: April 2025
- ❑ Estimated Completion: May 2026

→ Terminal A Expansion Consolidated Ground Transportation Center (GTC)

- ❑ Project Budget: \$50 Million
- ❑ Contracting Method: Design-Bid-Build
- ❑ Contractor: TBD
- ❑ Design Consultant: ARUP
- ❑ Design: Concept analysis underway
- ❑ Projected Start of Construction: May 2026
- ❑ Estimated Completion: June 2027

Terminal B to Concourse B Pedestrian Walkway



Terminal B to Concourse B Pedestrian Walkway



Overhead View of Walkway from Terminal B

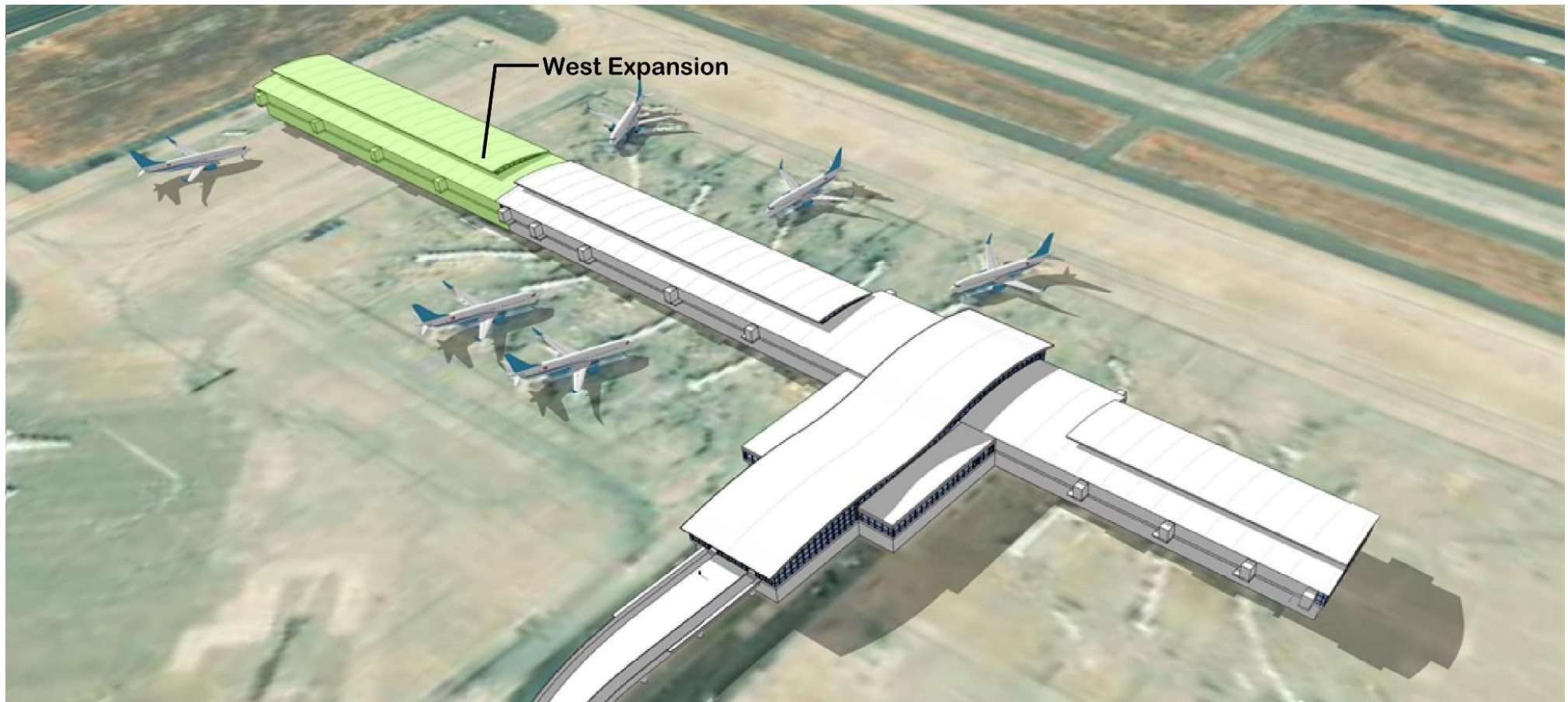


South Walkway at Vertical Circulation

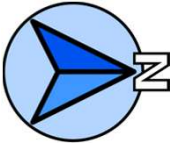
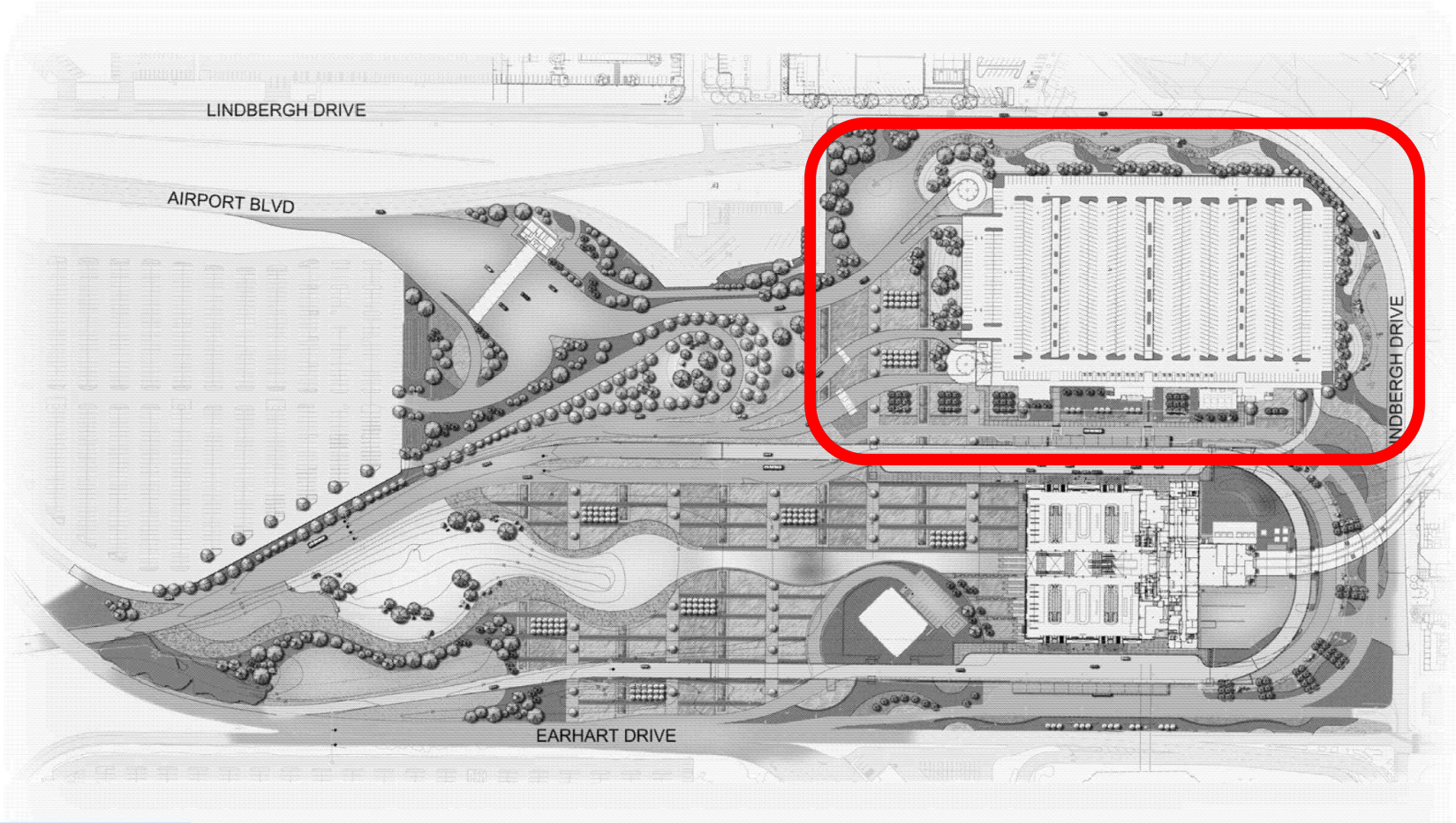


Central Space of Vertical Circulation Hub

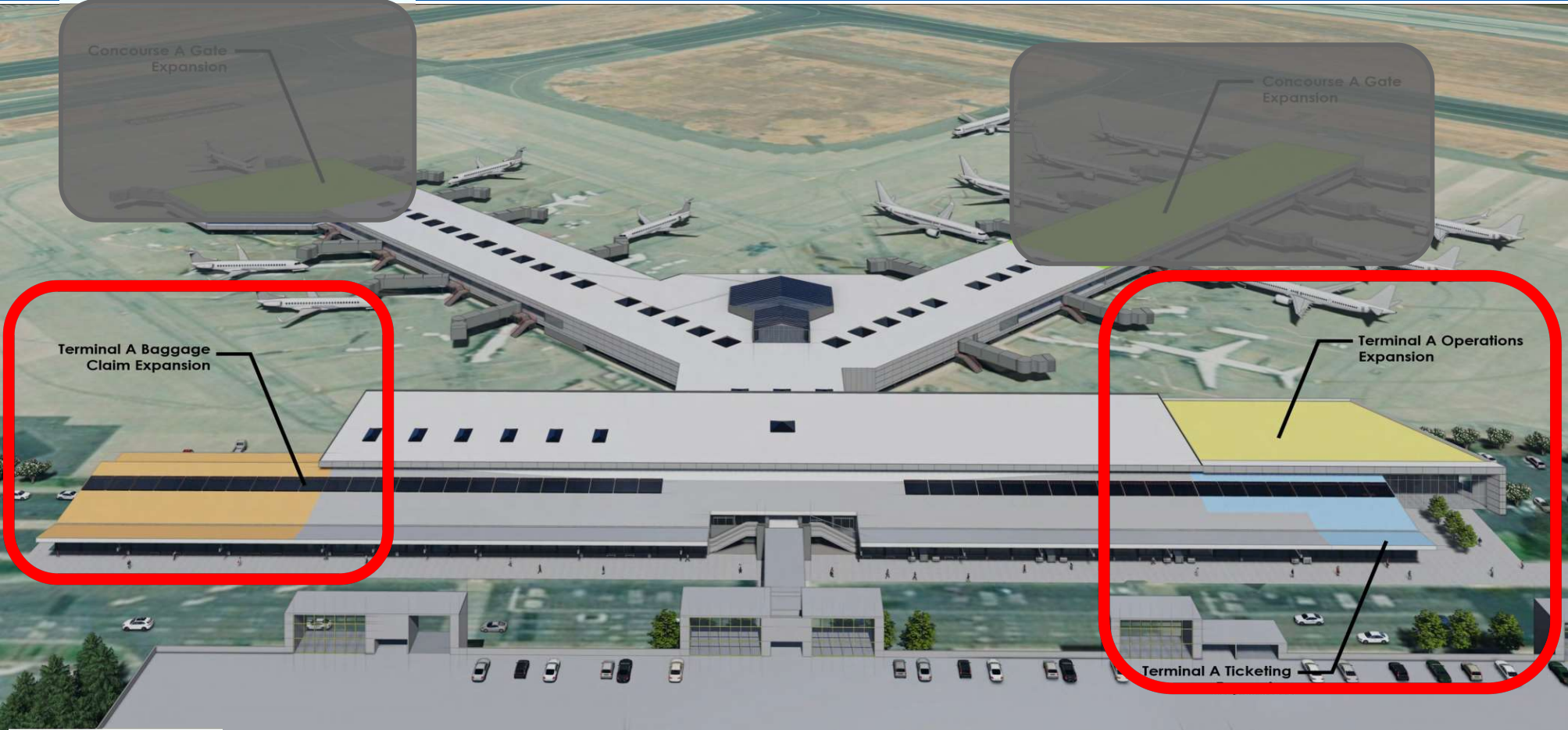
Concourse B Expansion (6 to 8 Gates)



Terminal B Parking Garage



Terminal A Expansion



GTC & ConRAC Access/Configuration

